

# HILLSDALE FREE PUBLIC LIBRARY ANNUAL REPORT 2008



“Building on a Strong Foundation”

**SUBMITTED BY**

**DAVID J. FRANZ  
LIBRARY DIRECTOR**

**WITH ASSISTANCE FROM  
LAURA LEONARD  
LIBRARIAN  
AND  
CINDY GREENWALD  
CHILDREN’S LIBRARIAN**

**FEBRUARY 2009**

Executive summary.....	- 2 -
I. Circulation statistics .....	- 3 -
Daily circulation averages 2006 - 2008.....	- 4 -
Average hourly circulation by day 2008.....	- 5 -
Circulation by material type and department.....	- 5 -
Reciprocal borrowing.....	- 8 -
Reciprocal borrowing 2000 – 2008.....	- 8 -
Electronic loans.....	- 9 -
II. Collections.....	- 10 -
Collection diversity.....	- 11 -
Collection age .....	- 12 -
III. Hours of service .....	- 12 -
Manpower .....	- 13 -
Public Computer Usage .....	- 13 -
Volunteers .....	- 14 -
IV. Patron registration and library use.....	- 15 -
VI. Other activities.....	- 16 -
2008 Statement of value.....	- 17 -
2008 OPERATING BUDGET.....	- 18 -
Librarian’s Appendix .....	- 20 -

## Executive summary

Highlights from the year:

- Circulation was up 9% the equivalent of one full month in 2007.
- Use of our public computers was up 10%
- Loans to other libraries increased 11%
- Our operating budget was up only 1.9%
- Manpower increased by only 1/10<sup>th</sup> of a full time equivalent
- The cost per circulation remains one of the lowest in the Bergen County Cooperative Library System. In 2008 it was **\$3.30** per circulation. (A drop from \$3.53 in 2007!) What can you buy for that at Barnes & Noble? A tall mocha latte.
- Our newly installed people counter indicated over 10,000 visitors per month! 122,000 annually.

The library circulated 221,722 items. This a conservative total of over **\$3 million** in material value circulated on an operating budget of \$730,060. This is a return on investment of 503% based upon the Borough's contribution of \$660,341. The library's circulation is far above that of local averages for libraries serving a similar population size and operating in our budget range. The library's overall operating budget closely follows local averages. On a percentage basis, we spent less on salaries and wages and more on materials than local averages. In summary, the library continues to operate at a very high level of efficiency and productivity.

Statewide comparisons are based upon 2007 data, the latest available. Hillsdale is compared to other libraries serving between 10,000 and 15,000 residents. Hillsdale is also compared to other libraries with between \$500,000 and \$750,000 annual operating budgets.

Comparisons to similar Bergen libraries are limited to those serving populations between 7,000 and 13,000 with 2007 operating budgets between \$650K and \$800K. The Bergen County Cooperative Library System statistics are available at: <http://www.bccls.org>

The BCCLS libraries used for comparison are:

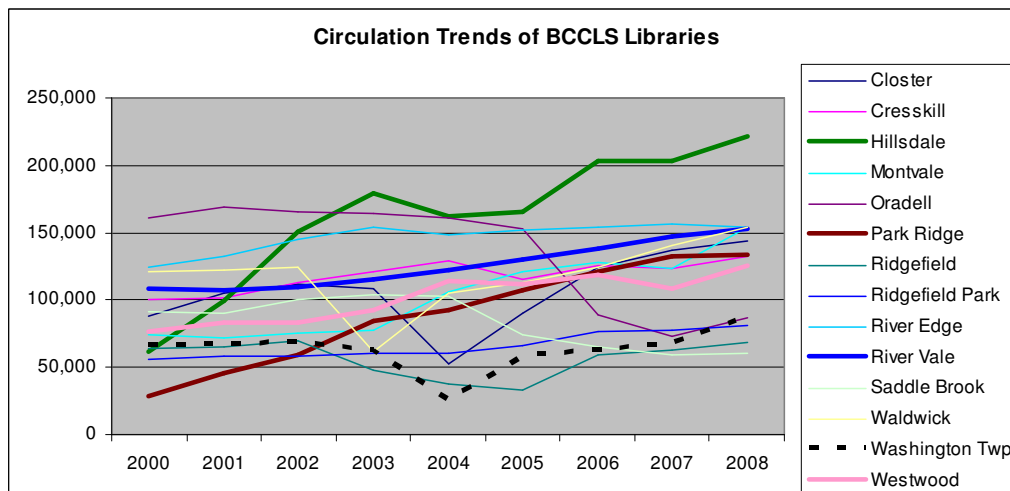
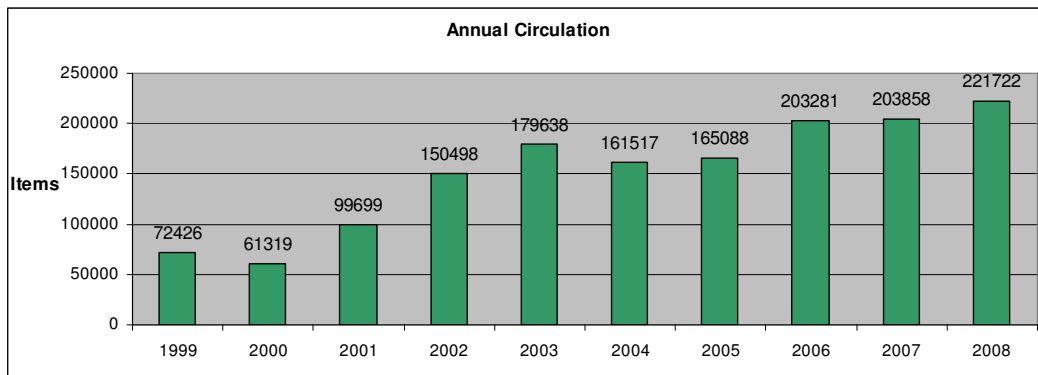
Closter, Cresskill, Montvale, Oakland, Oradell, Park Ridge, Ridgefield, Ridgefield Park, River Edge, River Vale, Saddle Brook, Waldwick, Washington Twp, Westwood.

# I. Circulation statistics

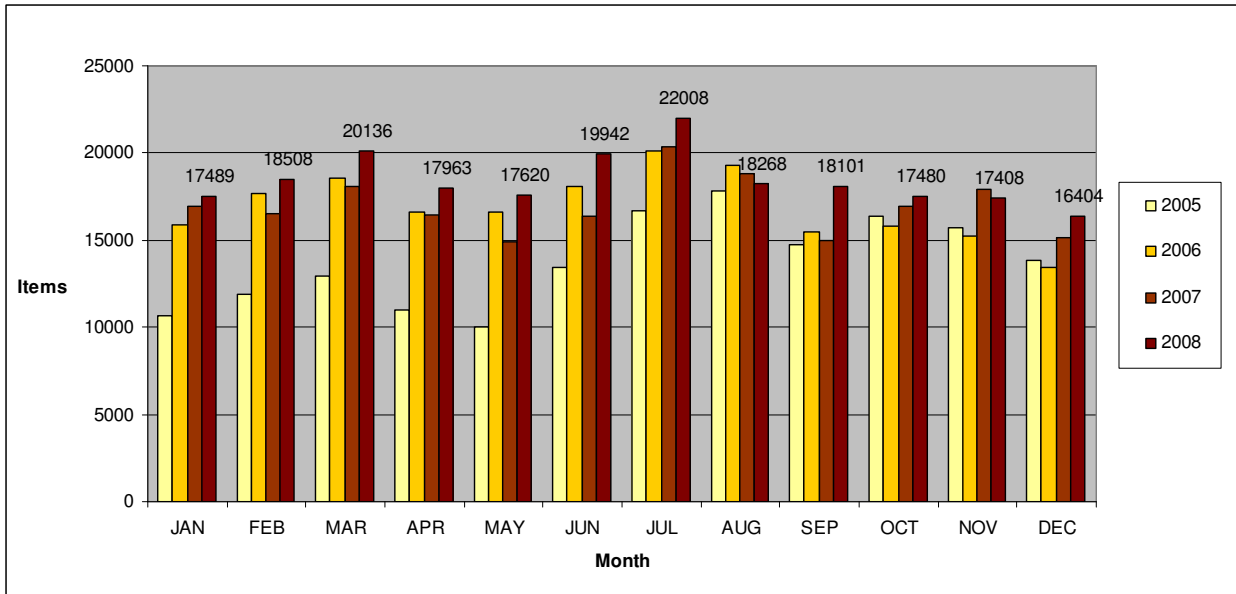
The computer registers a circulation every time an item is charged to a patron. Renewals also register as circulations. Approximately 22% of the circulation reported is a result of renewals. The following circulation reflects the number of Hillsdale items charged out to either Hillsdale borrowers or to borrowers from other libraries. In 2008 a new record was established at **221,722**. This includes 395 downloadable audio books.

The 2008 average for Bergen libraries was 122,825.  
 The 2007 state average for similar population group was 77,715.  
 The 2007 state average for similar budget group was 83,108.

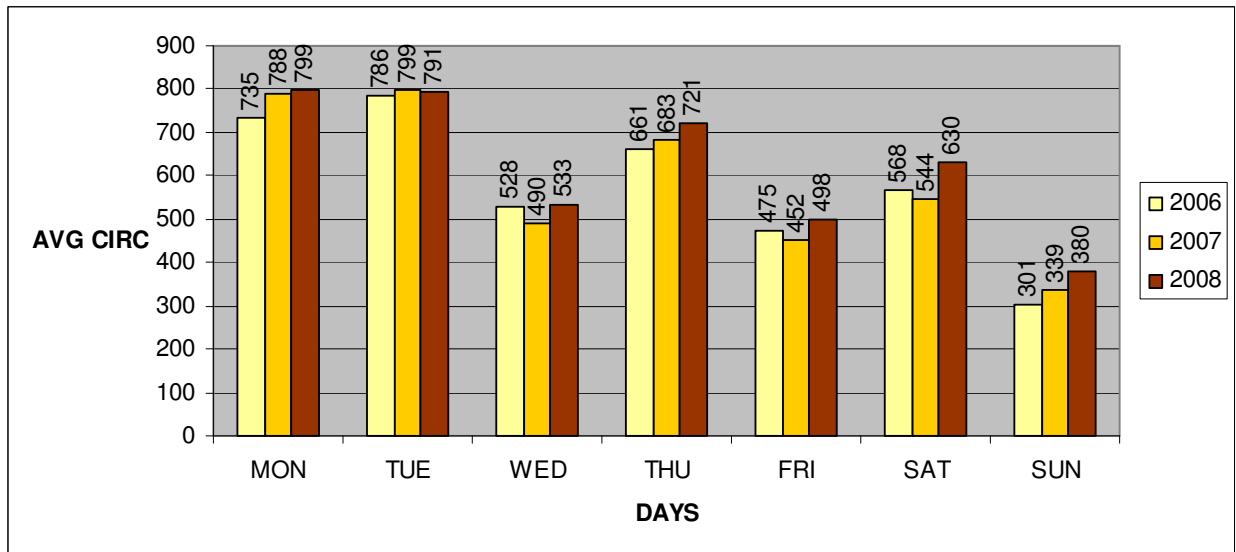
Hillsdale’s 2008 circulation per capita was 22 items.  
 The 2008 average for Bergen libraries was 12.3 items.  
 The 2008 average for all Bergen libraries was 9.7 items.  
 Annual circulation totals 1999 – 2008.



Overall circulation by month 2005-2008.

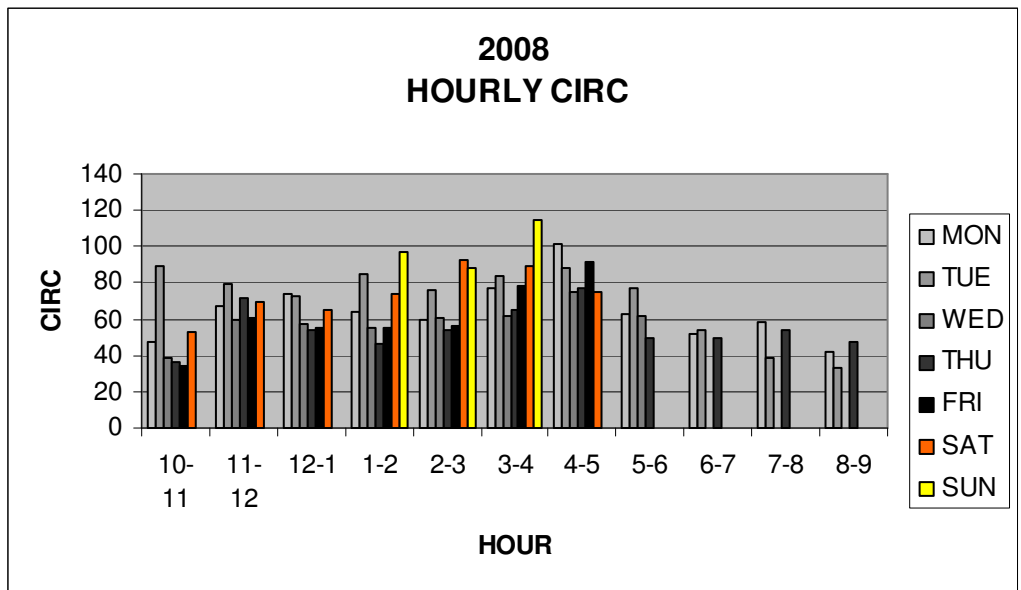


Daily circulation averages 2006 - 2008.



**Average hourly circulation by day 2008.**

HOUR	MON	TUE	WED	THU	FRI	SAT	SUN
10-11	47	90	38	37	34	52	
11-12	68	79	59	72	61	70	
12-1	73	72	57	54	55	65	
1-2	64	85	55	46	55	74	97
2-3	60	76	60	54	56	92	89
3-4	77	83	62	65	78	89	115
4-5	101	88	75	77	91	75	
5-6	62	77	62	50			
6-7	52	54		50			
7-8	58	39		54			
8-9	42	33		48			



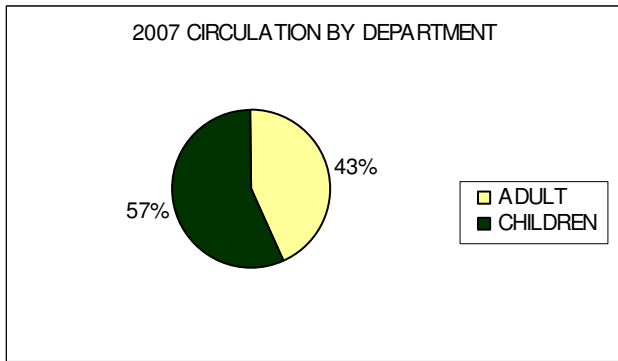
**Circulation by material type and department.**

The adult collection continues to show signs of improvement. The ratio of adult circulation compared to the busy children’s room improved by another percentage point to 44%. By comparison, in 2001 children’s materials accounted for 66% of all circulation. Our children’s room has always been popular. Generally, children’s circulation represents between 30 and 40% of other BCCLS libraries circulation.

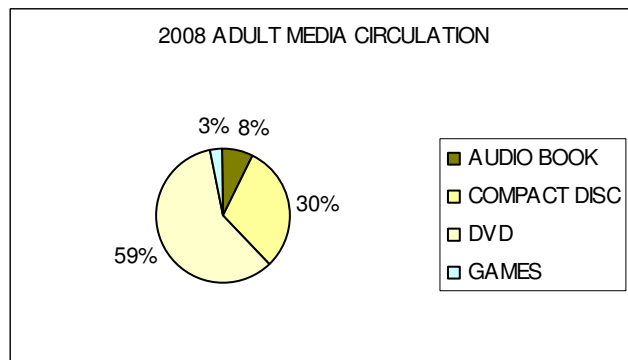
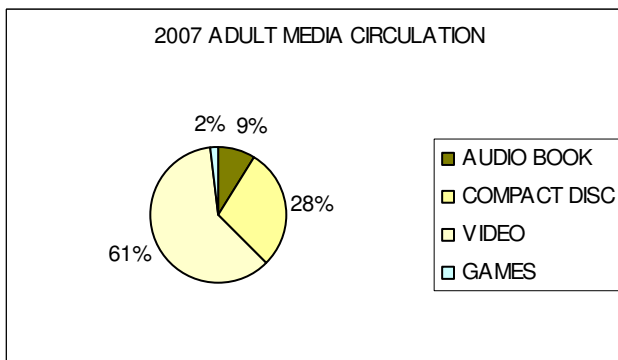
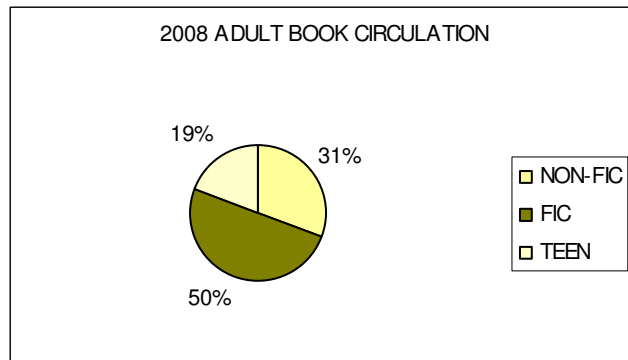
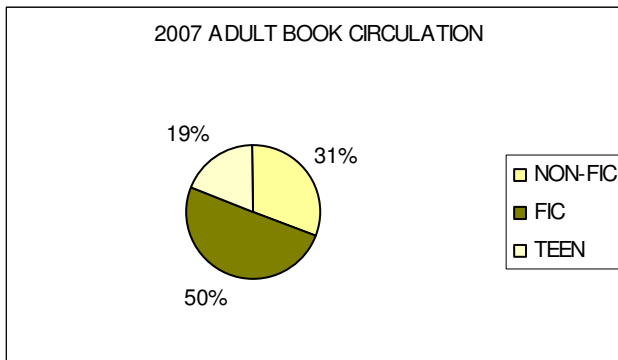
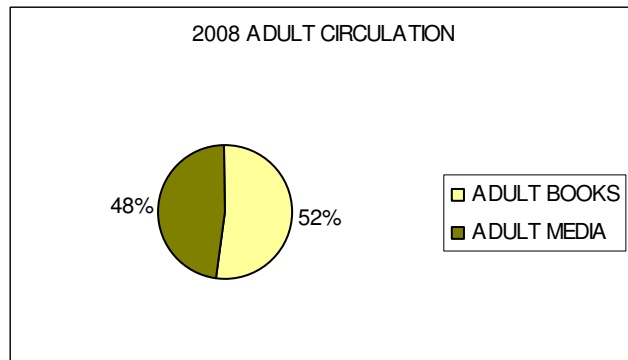
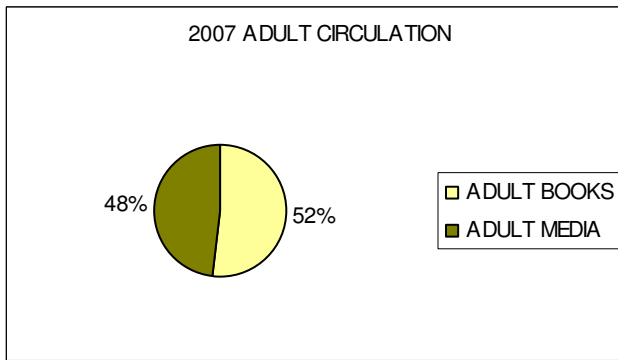
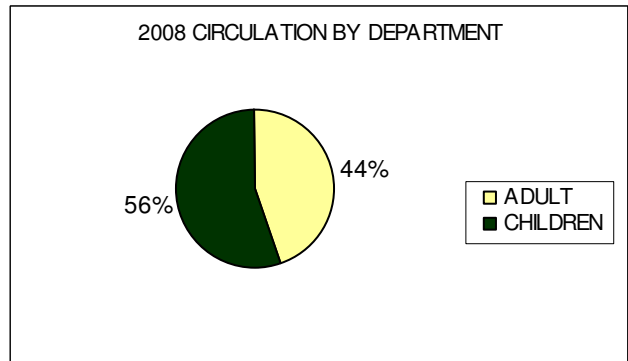
There was no dramatic change in the proportional circulation between books and media.

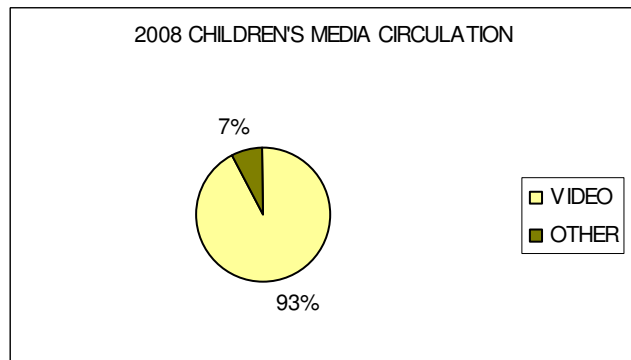
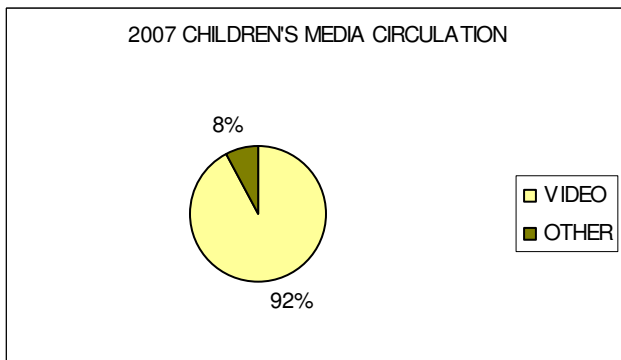
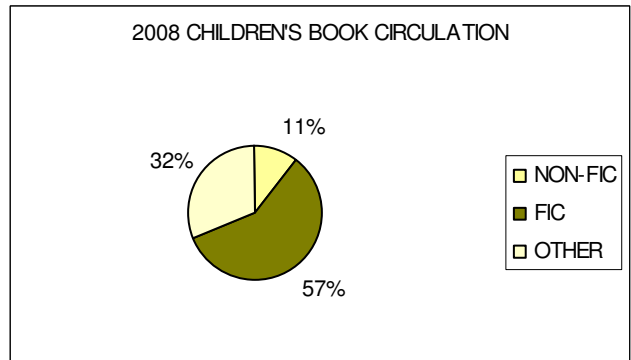
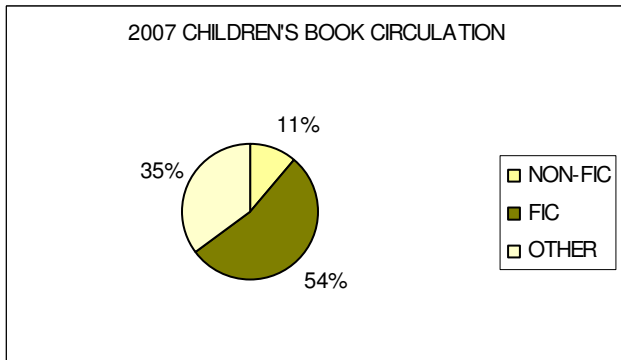
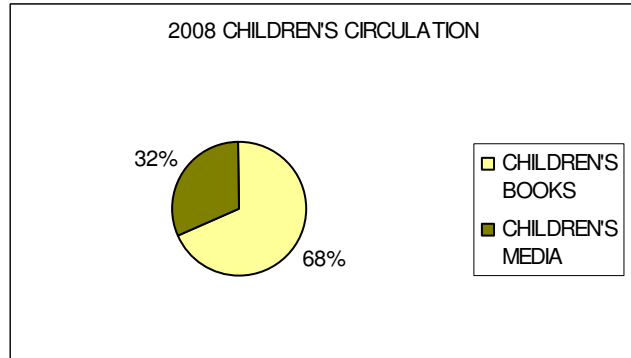
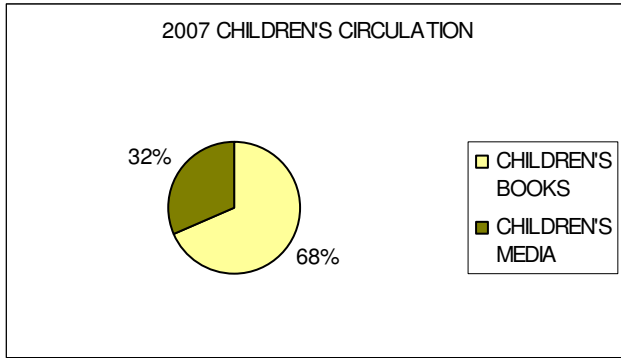
Children’s books continue to account for 68% of juvenile circulation.

Circulation by departments and material types  
2007



Circulation by departments and material types  
2008





Notes: "Other" children's books include board books, picture books, and easy readers.

"Other" children's media include audio books, CD-Rom, and compact discs.



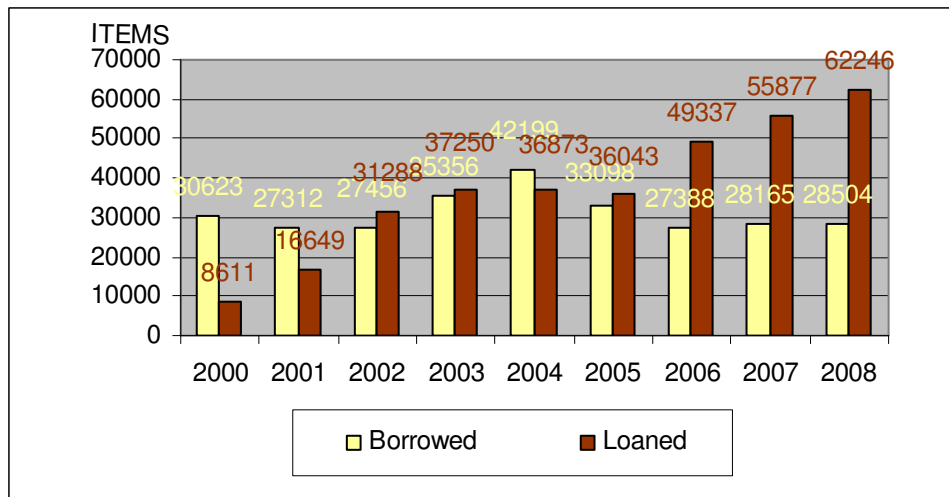
## ***Reciprocal borrowing***

The Hillsdale Free Public Library participates in the Bergen County Cooperative Library System (BCCLS). Members of Hillsdale Library may borrow directly from other BCCLS Libraries or they may choose to borrow via electronic loan request. Reciprocal borrowing statistics refer to Hillsdale items lent to other BCCLS libraries and items borrowed from other BCCLS libraries.

In 2008 the number of items loaned grew by 11%. This combined with only a 1% increase in number of items borrowed may be attributed to a collection that continues to fill local patron demand. Note: Washington Twp. accounted for 9.3% of our circulation. Westwood accounted for 4.9%. River Vale accounted for 3.8%.

The library receives a bi-annual reimbursement from BCCLS whenever lending exceeds borrowing (net plus). The net plus reimbursements received and receivable in 2008 totaled \$15,406.

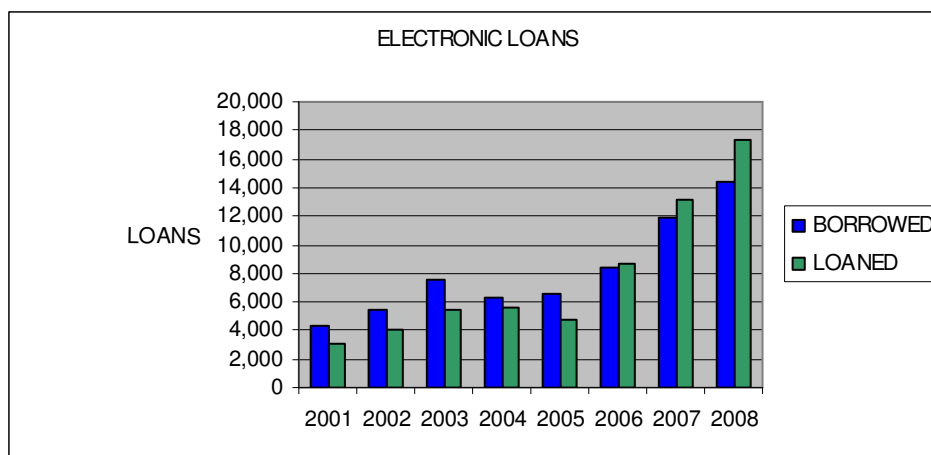
### ***Reciprocal borrowing 2000 – 2008.***



	BORROWED		LOANED	
2002	27456	1%	31288	88%
2003	35356	29%	37250	19%
2004	42199	19%	36873	-1%
2005	33098	-22%	36043	-2%
2006	27388	-17%	49337	37%
2007	28165	3%	55877	13%
2008	28504	1%	62246	11%

## Electronic loans

Electronic Loans are a subset of reciprocal circulation. Instead of patrons doing the work, library staff devote much more time to handling these tasks. Every loan request initiated by a Hillsdale patron is processed by a staff member who determines if Hillsdale owns the item or if a request must be forwarded via e-mail to another BCCLS library. Requests from other libraries are received via e-mail. These items are pulled from the shelves, checked out to the patron, and packaged for delivery. Fulfilling loan requests from other libraries is a time intensive activity.



	BORROWED	CHANGE	LOANED	CHANGE
2001	4,345		3,105	
2002	5,458	25.6%	4,001	28.9%
2003	7,611	39.4%	5,495	37.3%
2004	6,261	-17.7%	5,643	2.7%
2005	6,530	4.3%	4,715	-16.4%
2006	8,430	29.1%	8,738	85.3%
2007	11,848	40.5%	13,212	51.2%
2008	14,441	21.9%	17,335	31.2%

## II. Collections

Materials are constantly added and withdrawn from the library. The library expended \$100,715 (13.8% of the budget) on materials in 2008. This is a \$9,133 decrease from 2007 (15.3% of 2007 budget). A small percentage of the collection is acquired by donation.

The library collections can be divided into many subcategories. For the purposes of this report only general categories are presented. Miscellaneous items and periodicals are excluded from the collection counts and pie charts. Young Adult books combine both fiction and non-fiction titles. Young Adult audio books are reported under adult audio visual materials.

Media represents 14% of the adult collection and accounts for 48% of adult circulation. Media represents 13% of the children's collection and accounts for 32% of children's circulation. Loose issue magazines are omitted from these calculations. Magazines account for 1.5% of all circulation. The adult audio book collection represents only 1% of the collection but does 2% of the circulation. This would be a good category to expand in 2009. By contrast, adult non-fiction represents 18% of the overall collection but accounts for only 7% of overall circulation.

The 2007 Bergen libraries average materials budget was \$96,236 or 13.8%  
 The 2007 state average materials budget for similar population group was \$75,399 (12.4%)  
 The 2007 state average materials budget for similar budget group was \$83,304 (13.1%)

	Year End 2007	Added 2008	Withdrawn 2008	Year End 2008
<b>Adult Collections</b>				
Books - NF	11993	958	531	12420
Books - FIC	10295	1484	841	10938
Books - Ref	1748	107	628	1227
Books - Teen	3327	894	375	3852
Audio Visual	4241	987	732	4490
<b>Children's Collections</b>				
Books	33515	3892	4128	33279
Audio Visual	3665	585	1106	3144

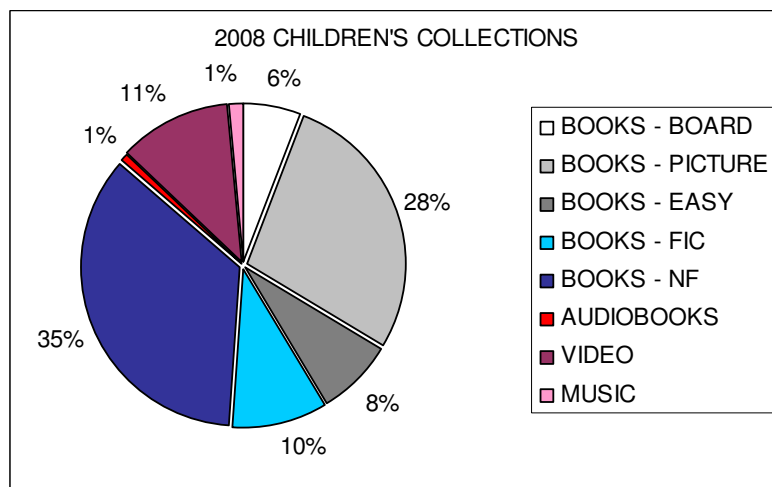
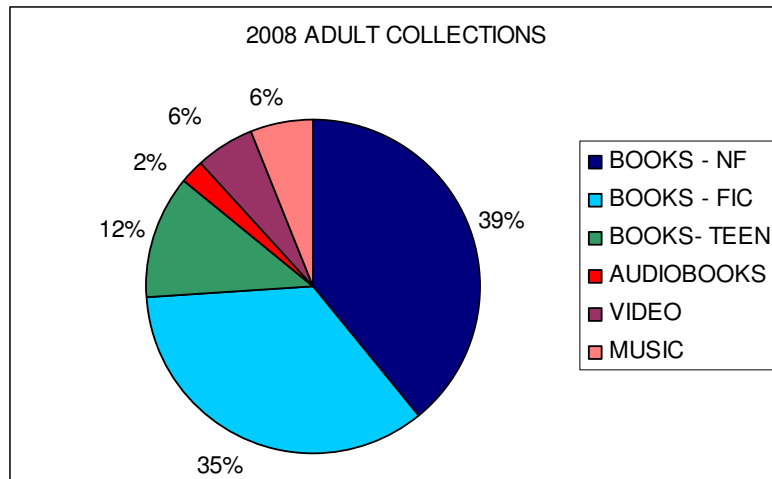
Hillsdale holds a total of 69,313 items in its collection, excluding magazine issues.

The 2008 Bergen libraries average collection was 60,412.

The 2007 state average for similar population group was 58,360

The 2007 state average for similar budget group was 59,313

## Collection diversity



	2007 % OF ALL COLLECTIONS	2007 % OF ALL CIRCULATION	2008 % OF ALL COLLECTIONS	2008 % OF ALL CIRCULATION
Adult - NF	17%	7%	18%	7%
Adult - FIC	15%	11%	16%	11%
Adult - TEEN	4%	4%	6%	4%
Adult - Audiobook	1%	2%	1%	2%
Adult - Video	2%	12%	3%	12%
Adult - Music	2%	6%	3%	6%
Child - NF	10%	4%	10%	4%
Child - FIC	22%	20%	3%	21%
Child - Board/Picture/Easy	13%	13%	12%	12%
Child - Video	4%	16%	3%	16%

## ***Collection age***

Age of the collection is based upon the publication date of the items in the collection. The overall collection continues to improve. Non-fiction remains the focus of targeted weeding and development. Although many new reference and non-fiction titles have been purchased, some old classics are bringing down the averages.

	<b>HILLSDALE 2007</b>	<b>HILLSDALE 2008</b>	<b>BCCLS 2008</b>	<b>WESTWOOD 2008</b>	<b>RIVERVALE 2008</b>
<b>All Collections</b>	<b>1996</b>	<b>1998</b>	<b>1995</b>	<b>1999</b>	<b>1998</b>
<b>Adult Non-fiction</b>	<b>1989</b>	<b>1990</b>	<b>1992</b>	<b>1996</b>	<b>1996</b>
<b>Adult Fiction</b>	<b>2000</b>	<b>2002</b>	<b>1998</b>	<b>2000</b>	<b>2000</b>
<b>Children's Bks</b>	<b>1996</b>	<b>1998</b>	<b>1994</b>	<b>1998</b>	<b>1996</b>
<b>Children's Med</b>	<b>2000</b>	<b>2002</b>	<b>2001</b>	<b>2000</b>	<b>2001</b>
<b>Media</b>	<b>2001</b>	<b>2003</b>	<b>2000</b>	<b>2002</b>	<b>2001</b>
<b>Reference</b>	<b>1977</b>	<b>1985</b>	<b>1983</b>	<b>1985</b>	<b>1990</b>
<b>Young Adult</b>	<b>2001</b>	<b>2002</b>	<b>2000</b>	<b>2003</b>	<b>1999</b>

## **III. Hours of service**

The library was open 2,876 hours and 342 days in 2008.

The library was open 2,844 hours and 339 days in 2007.

The library was open 2,849 hours and 338 days in 2006.

The library was open 2,809 hours and 320 days in 2005.

The library was open 2,593 hours and 324 days in 2004.

The library was open 2,895 hours and 341 days in 2003.

The library was open 2,836 hours and 343 days in 2002.

## **Manpower**

Manpower is measured in full time equivalents (FTE). A full-time work week is 35 hours. There are four (4) full-time staff members. The remaining part-time employees, including pages comprise an additional 5.7 FTE. The overall manpower is 9.7 FTE.

Part-time employee hours in 2007:

<b>Page Hours</b>	<b>635</b>
<b>Library Assistant Hours</b>	<b>9,467</b>
<b>Reference Librarian Hours</b>	<b>114</b>
<b>Total P-T Hours</b>	<b>10,216</b>

Part-time employee hours in 2008:

<b>Page Hours</b>	<b>716</b>
<b>Library Assistant Hours</b>	<b>9,501</b>
<b>Sun Librarian Hours</b>	<b>114</b>
<b>Total P-T Hours</b>	<b>10,330</b>

FTE=35 hours x 52 weeks

1,820.00

PT FTE =

5.6

FTE=35 hours x 52 weeks

1,820.00

PT FTE =

5.7

Hillsdale expended \$344,681 on salaries and wages in 2008. When combined with benefits, social security, and insurance, personnel expenses totaled \$439,300 or 60% of the budget. This is a change from 58% in 2007, but still lower than the 63% in 2006.

The 2007 average for Bergen libraries was \$453,043 or 65.1%

The 2007 state average for similar population group was \$423,640 or 69.4%

The 2007 state average for similar budget group was \$429,077 or 67.5%

## **Public Computer Usage**

The library makes available 18 computer workstations for the public. Users are guaranteed up to one hour at a PC per day, but frequently longer sessions may occur depending upon demand. During the year approximately 19,682 individual sessions occurred. This is a 10% increase over 2007. This is based upon sign-ups at the main desk. Statistics for the children room were not recorded as they are easily monitored from the circulation desk.

### **Average Number of Daily Sessions.**

	Monday	Tuesday	Wednesday	Thursday	Friday	Saturday	Sunday
2007	66	66	55	63	43	47	26
2008	76	72	57	70	47	48	29

## *Volunteers*

44 volunteers provided 2,526 hours of service.

Most volunteer hours are contributed by the members of the Pascack Valley Literacy Volunteers. Adults assist other adults in learning English as a Second Language (ESL). Annual statistics for this program are tabulated in the spring. There are currently 25 adult volunteers at the start of 2008. Doris Streich is responsible for coordinating all of the tutors and students. Carolyn Borowski is now assisting Doris. Doris alone volunteers at the library between 8 and 15 hours weekly, approximately 400 hours annually. Tutors account for over 1,750 hours annually.

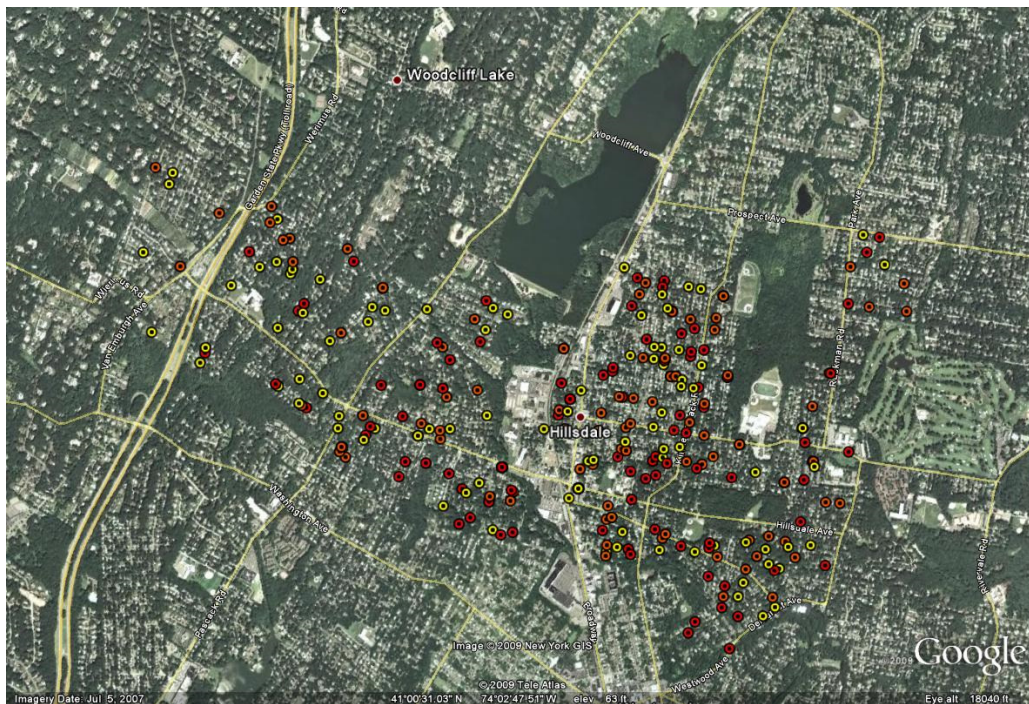
A list of volunteer opportunities is found on the library website.

## IV. Patron registration and library use

558 people received Hillsdale Library cards in 2008. Of the 5,856 currently registered users 3,729 used their card at least once during 2008. That represents 37% of the population of the Borough. This percentage is not exact because families may use only one card to borrow materials for several family members. The drop in registered users is explained by the periodic purging of cards after 3 years without use. These are typically residents that have moved on in one way or another.

	2001	2002	2003	2004	2005	2006	2007	2008
NEW REGISTRATIONS	526	654	613	443	560	545	458	558
TOTAL CARDS	6,579	6,576	6,060	6,048	6,629	7,169	6,767	5,856
% OF POPULATION	65%	65%	60%	60%	66%	71%	67%	58%
CARDS USED DURING YEAR						3,733	3,650	3,729
% OF POPULATION						37%	36%	37%

A visual geographic representation of our top borrowers is found below. The top 100 borrowers (228 to 781 items) are red dots. The following 100 borrowers (153 to 226 items) are orange dots. And the next group of 100 (116 to 152 items) are yellow dots. These people really use their library and travel from all ends of the borough to get to us. There seems to be no geographic bias.





## V. Programs

During 2008, 3,656 people attended 178 library sponsored programs. In accordance with State Library reporting procedures, individual story time sessions are recorded as single programs. 766 people attended 67 programs and/or meetings sponsored by community organizations.

## VI. Other activities

The staff of the library actively participates on committees within the Bergen County Cooperative Library System (BCCLS) and within the New Jersey Library Association. Laura Leonard served on the Garden State Teen Book Award Committee. Laura was also elected to serve as an at-large member of Young Adult section of the New Jersey Library Association. Cindy Greenwald participated on the BCCLS Youth Services Committee. Debbie Lease served on the BCCLS Policies and Procedures Committee. David Franz served on the Collection Development and Reference Committee and the Rate Card Committee.

### 2008 Awards and Honors

- Received a public relations award from the New Jersey Library Association for the “One day in Hillsdale” project

### 2008 Accomplishments

- Initiated the Hillsdale Storybook Project with the aim to collect oral histories and accounts from residents
- Initiated a volunteer delivery service to the homebound
- Digitized the remaining portion of the Hillsdale Herald with funding from the Friends of the Library
- The Friends of the Library sponsored a 5 week film festival
- Installed 4 security cameras with recording capability
- Reviewed Internet filtering software for potential use in children’s room
- Installed a slat wall system in the teen area to promote books
- Greatly enhanced the wireless network by adding three new access points
- Collaborated with the Historic Preservation Committee on a walking history tour brochure
- Installed a people counter at the main entrance

## 2008 Statement of value

5856	Registered Hillsdale Patrons	
10087	2001 Population	
<b>58.1%</b>	Hillsdale Residents are registered users of the library. County average is 58%	
221,722	Number of items circulated by the Hillsdale library in 2008.	
\$15.00	Conservative cost of an average library item	
<b>\$3,325,830.00</b>	Total value of items circulated by the Hillsdale library	
	<b>A return on investment of</b>	<b>503.7%</b>
<hr/> \$660,341.00	2008 budget commitment toward the library from the Borough	
<b>\$2,665,489.00</b>	Total SAVINGS to residents of Hillsdale from the maintenance of a free public library in 2008. This is money that can then be spent patronizing local businesses, or saved in retirement accounts, or saved toward college tuition.	
	If Hillsdale did not have access to a free library and residents wished to continue purchasing books for their children and their own reading interests, they would have spent	<b>\$3,325,830.00</b>
	over the the course of 2008.	
	Also, bear in mind that the library provides assistance in locating materials. The library is able to locate and borrow from libraries throughout the United States. The library also supplies free access to the Internet, children's story hours, programs, and tutors for adults learning english as a second language.	

## 2008 OPERATING BUDGET

2008 Budget Summary	2007 BUDGET	2007 FINAL	2008 BUDGET	2008 FINAL
<b>LIBRARY BUDGET LINES</b>				
<b>01 Collection Development</b>				
0110 A - Adult Books	32,600.00	35,615.06	27,800.00	33,361.53
0111 C - Children's Books	19,070.00	20,361.70	16,000.00	18,455.34
0112 YA - Young Adult Books	6,810.00	6,438.69	6,000.00	6,854.90
0113 R - Reference Books	10,442.00	11,376.33	8,000.00	8,557.79
0114 P - Periodicals	7,264.00	7,402.72	6,200.00	6,294.60
0120 BTA- Books on Tape - Adult	7,720.00	7,792.53	6,500.00	6,430.74
0121 BTC - Books on Tape - Child	910.00	974.20	800.00	538.05
0130 MA - Music CDs - Adult/YA	5,448.00	4,796.36	4,500.00	2,940.69
0131 MC - Music CDs - Child	270.00	546.68	300.00	270.72
0140 VA - Video/DVD - Adult	7,718.00	8,302.24	7,000.00	7,263.05
0141 VC - Video/DVD - Children's	3,633.00	4,443.04	3,000.00	4,087.19
<b>Total CollectionDevelopment</b>	<b>101,885.00</b>	<b>108,049.55</b>	<b>86,100.00</b>	<b>95,054.60</b>
<b>02 Maintenance &amp; Utilities</b>				
0210 E - Electric	25,645.00	31,630.61	33,800.00	34,195.08
0220 G - Gas	13,400.00	8,431.92	10,000.00	8,819.03
0230 T - Telephone	3,600.00	3,540.97	4,500.00	4,955.08
0240 W - Water	1,800.00	2,061.53	2,100.00	2,403.18
0250 - Repairs/ Maintenance	3,000.00	7,214.49	3,500.00	3,299.92
0260 - Service Contracts	4,375.00	4,470.10	4,425.00	4,781.32
<b>Total Maintenance &amp; Utilities</b>	<b>51,820.00</b>	<b>57,349.62</b>	<b>58,325.00</b>	<b>58,453.61</b>
<b>03 Supporting Services</b>				
0310 - BCCLS	18,750.00	18,750.00	20,745.00	20,745.00
0320 - Supplies	10,000.00	11,071.78	12,000.00	13,498.95
0322 - Photocopier	2,700.00	2,042.94	3,200.00	4,015.25
0325 - Postage	1,500.00	1,290.37	1,500.00	944.65
0340 - Programs	5,000.00	4,889.33	5,000.00	5,105.64
0341 - Adult ESL Program	2,000.00	2,000.00	2,000.00	2,000.00
0343 - Historical Newspapers	2,600.00	2,795.00	1,095.00	1,095.00
0350 - Memberships	300.00	335.00	300.00	315.00
0360 - Conferences/Travel	2,000.00	1,730.39	2,250.00	2,066.48
0370 - Advertising/Publicity	4,200.00	2,585.00	0.00	0.00
0380 - Audit	1,750.00	1,750.00	1,750.00	1,500.00
0390 - Recording Secretary	570.00	427.50	600.00	400.00
0392 - Professional Development	500.00	40.00	500.00	167.41
<b>Total SupportingServices</b>	<b>51,870.00</b>	<b>49,707.31</b>	<b>50,940.00</b>	<b>51,853.38</b>
<b>04 State Aid</b>				
State Aid 2006 for 2007/8	10,446.00	10,210.61	235.39	235.39
State Aid 2008/2009			10,823.00	10,823.00
<b>Total State Aid Expenditures</b>	<b>10,446.00</b>	<b>10,210.61</b>	<b>11,058.39</b>	<b>11,058.39</b>

**05 - Grants**

<b>Bergen Co / Newspaper Grant</b>	<b>1,235.00</b>	<b>1,235.00</b>	<b>0.00</b>	<b>0.00</b>
------------------------------------	-----------------	-----------------	-------------	-------------

**09 Other Expenses**

0910 - Friend's Supported	0.00	3,160.59	0.00	3,982.03
0920 - Restricted Donations	0.00	5,727.85	0.00	2,819.56
0930 - Miscellaneous	0.00	4,793.04	0.00	3,771.80
0940 - Bank Charges	0.00	182.75	0.00	28.70
0960 - Reimburse Libraries	0.00	274.95	0.00	387.00
<b>Total Unbudgeted items</b>	<b>0.00</b>	<b>14,139.18</b>	<b>0.00</b>	<b>10,989.09</b>
<b>LIBRARY LINE TOTALS</b>	<b>217,256.00</b>	<b>240,691.27</b>	<b>206,423.39</b>	<b>227,409.07</b>

**BOROUGH BUDGET LINES**

Salaries & Wages	330,900.00	327,841.04	348,700.00	344,680.71
Building Maintenance	42,315.00	45,167.59	44,150.00	50,897.73
Disposal Services	650.00	0.00	650.00	0.00
Telephone Charges (LD)	575.00	337.48	0.00	88.51
Payroll Services	2,500.00	1,072.81	2,500.00	867.76
Social Security	25,350.00	24,878.35	26,680.00	27,567.62
Insurance - Life	350.00	405.60	400.00	343.20
Insurance - Workers Comp	1,400.00	0.00	1,400.00	1,400.00
Insurance - Medical	66,942.00	58,252.00	67,140.00	61,545.00
Insurance - Dental	4,356.00	3,561.00	4,200.00	3,762.00
Insurance - Liability	11,924.00	14,479.00	14,479.00	11,498.00
<b>Total Borough Budget Items</b>	<b>487,262.00</b>	<b>475,994.87</b>	<b>510,299.00</b>	<b>502,650.53</b>

<b>TOTAL LIBRARY EXPENSES</b>	<b>704,518.00</b>	<b>716,686.14</b>	<b>716,722.39</b>	<b>730,059.60</b>
-------------------------------	-------------------	-------------------	-------------------	-------------------

LIBRARY INCOME	2007	2007	2008	2008	2009
	BUDGET	FINAL	BUDGET	FINAL	
Money handled directly by Boro	487,262.00	475,994.87	510,299.00	502,650.53	
Boro Cash Support	157,052.00	157,052.00	150,042.00	150,048.00	
Boro Reserve Balance Prev. YR - brought forward*			0.00	11,298.33	7,642.47
State Aid	10,446.00	10,823.00	0.00	10,229.00	
Balance State Aid Prev. Yr brought forward (est.)*	10,446.00	10,446.00	11,058.39	11,058.39	
Donations	2,000.00	9,313.42	2,000.00	7,340.58	
Fines	16,000.00	24,045.47	20,000.00	23,011.73	
WCL - Memberships	7,000.00	9,100.00	7,000.00	9,925.00	
Interest - Checking	777.00	2,435.14	948.00	925.74	
Lost Cards	300.00	372.00	300.00	337.00	
Lost Items	1,500.00	2,756.43	1,500.00	2,616.56	
Other Miscellaneous	5,235.00	21,221.71	13,575.00	15,692.80	
<b>TOTAL LIBRARY INCOME</b>	<b>698,018.00</b>	<b>723,560.04</b>	<b>716,722.39</b>	<b>745,133.66</b>	

note: 4th Quarter 2008 boro support check deposited January 09. Dec 31 balance = 112757.53

note: Borough 2008 expenditures as reported on 1/23/2009. Other adjustments may be necessary.

# Librarian's Appendix

## Inter-Library Loan

Through the use of the statewide JerseyCat Interlibrary Loan System our library can borrow from nearly any public and academic library in the State and throughout the U.S. We are also called upon to send our unique items to other libraries in the state. In 2008 52 items were borrowed for Hillsdale patrons and we supplied 162 items.

## Reference

A sampling of reference questions with answers:

### ARTS

- A patron was looking for information about a Greek tragedy that she saw performed in Syracuse, Italy. She thought it was called coefore or eumenidi. The correct spelling of the plays are: Choephoroe (aka Libation Bearers) and Eumenides by Aeschylus. I found the information using the Literature Resource Center database through Infotrac.
- A patron is getting ready for an audition and she wants to imitate the style of Alice Ghostley. I found a listing of movie appearances, but the patron did not want any of those film. I then discovered that she was on Bewitched and ordered season 6 on DVD from a BCCLS library. I also suggested that the patron search YouTube.
- A patron needed photos of and information on how to create hairstyles from the 1930s for a play she is helping to costume.
- A patron requested a book that would teach him how to build a guitar. A book was ordered from a BCCLS library.
- A patron wanted a book about movie special-effects. I located a book in River Vale, the patron went to pick it up.

### Heard it on TV/Radio

- A patron heard a spoken word poet interviewed on NPR. She thought her name was Gail Donnelly. I was able to search the show pages for 820 am and found that the poet is named Gayle Donley. I ordered an anthology that had some of her poems and provided the patron with the poet's website so she could purchase recordings.
- A patron saw a story about a Mother Teresa orphanage in Baghdad and wanted additional information before making a donation. I performed a google search and found the name of the orphanage and the charity that runs it. I provided contact information for the patron.

### Assignments

- A high school student requested information on identity – how identity is formed, influences, etc... Information was found in *The Dictionary of Psychology* and *The Encyclopedia of Social Sciences*.

- The mother of a **5<sup>th</sup> grader** came in to gather information because her daughter was asked to write a persuasive argument about hybrid cars and the dependence on foreign oil. I located some magazine articles using our databases that were on a lower reading level.
- A high school student was required to review three astronomical journals and read a recent article from each. Our library subscribes to two: "Astronomy" and "Discover". A list of additional titles was identified using the Ebsco databases. The articles can be read online.
- A middle school student needed information for a science fair project comparing various types (not brands) of nail polish. Articles were printed from our databases.
- A college student wanted information regarding ethics in film making, specifically editing on reality TV. Articles were identified using Ebsco databases.

### Local History/Genealogy

- A DJ from a Maryland radio station called to get information about Mr. Clendenny and his farm. The DJ grew up in Hillsdale and had been talking about working for him giving hayrides and caring for the horses. I was able to email him a link to the Hillsdale Scrapbook from the Local History page on our website and note specific pages of interest.
- Obituary request from someone living out-of-state. The obit was for a person who had lived in Hillsdale at one point. I accessed it via the Bergen Record database.

### Health/Medicine/Science

- A patron wanted a ranking of doctors for gall bladder surgery. I provided the patron with copies of *Top Doctors: Metro Area*, "NJ Monthly" top doctors issues, and "New York" top doctors issue.
- A patron seeking information about gout was referred to *The Gale Encyclopedia of Medicine* and [www.healthynj.org](http://www.healthynj.org)
- A patron called asking about the tree Magnolia Acuminata. I read him information from *The American Horticultural Society Encyclopedia of Plants & Flowers*.

### Reader's Advisory

- A patron finished all Daniel Silva's books and wanted additional suggestions. I offered LeCarre, Follet (earlier titles), and Forsyth as a starting point.
- A 10<sup>th</sup> grade boy asked for a good romance recommendation. I suggested *Rats Saw God* by Rob Thomas.
- A patron read a series, but could not remember the name. She described it as a private detective who was formerly a police officer with some mobster romance. I used Novelist to locate the author, Gianetti.
- A patron came in looking for a book recommended by a relative. He did not know the title or author, but described the plot, "It featured a cup or bowl made of stone that passed through time. The story revolves around the different people associated with the object at different times." I posted this to the BCCLS stumper listserv and received the answer, *The Blessing Stone* by Barbara Wood, within an hour.

### Business/Commerce/Finance

- A patron wanted information on LLCs and Subchapter S Corporations. Some information was located in two of our business books and another book was ordered via the BCCLS catalog.

# Teen Summer Reading Club Report

Last summer the library staff did a wonderful job promoting the teen summer reading club and handling the majority of sign-ups while I was on maternity leave. This year I was glad to be available to personally promote the program to teens as they entered the library.

The program is designed for students entering grades 7-12. 60 students registered and 43 of those completed the program. I was excited that 35 students joined for the first time this year! I am happy to report that 20 boys joined the program. Although that is half the number of girls, I feel that it is a step in the right direction. I will continue to make an effort to attract both boys and girls to the library.

Students were required to keep a log of the number of pages they read and received prizes at the end of the summer. The teens continue to amaze me with how much they read. Approximately 205,370 pages were recorded, with one teen reading 15,526 pages. The average teen read 4,889 pages this summer.

## **TEEN PROGRAMS**

Throughout the year there are numerous programs offered to teens. These include ongoing programs such as: Teen Advisory Group, Chat & Chew Book Club, and The Manga-Anime Club. Other events included: game nights, chocolate parties, mystery nights, and movie screenings. All told 627 teens participated in 49 programs during the course of the year.

## **PROFESSIONAL DEVELOPMENT**

This year I was elected to serve as Vice-President/President Elect of the Young Adult Section of NJLA. I am responsible for coordinating and submitting all ten programs sponsored by the YA section for the NJLA conference. I also lead meetings in the absence of the section President. My term runs from July 2008 – June 2009.

Respectfully submitted,

Laura Leonard

Reference / Teen Librarian