

HILLSDALE FREE PUBLIC LIBRARY ANNUAL REPORT 2010



“May we help you?”

SUBMITTED BY

**DAVID J. FRANZ
LIBRARY DIRECTOR**

**WITH ASSISTANCE FROM
LAURA LEONARD
LIBRARIAN
AND
CINDY GREENWALD
CHILDREN’S LIBRARIAN**

**FEBRUARY 2010
(FINAL BUDGET UPDATED JUNE 10, 2011)**

Executive summary.....	- 2 -
I. Circulation statistics	- 3 -
Daily circulation averages 2006 - 2010	- 5 -
Average hourly circulation by day 2010.....	- 6 -
Circulation by material type and department.....	- 6 -
Reciprocal borrowing.....	- 9 -
Reciprocal borrowing 2000 – 2010.....	- 9 -
Electronic loans.....	- 10 -
II. Collections.....	- 11 -
Collection diversity.....	- 12 -
Collection age	- 13 -
III. Hours of service	- 13 -
Manpower	- 14 -
Public Computer Usage	- 14 -
Volunteers	- 15 -
IV. Patron registration and library use.....	- 15 -
V. Programs	- 17 -
VI. Other activities.....	- 16 -
2010 Statement of value.....	- 17 -
2010 OPERATING BUDGET.....	- 18 -
Librarian’s Appendix	- 20 -
BCCLS Libraries used for comparison.....	- 25 -

Executive summary

Highlights from the year:

- ☞ Children's circulation dropped by over 10,000 items – But,
- ☞ Our children's circulation (110,847) was higher than the TOTAL circulation of 31 other BCCLS libraries.
- ☞ Circulation remains 32% higher than our highest circulating neighbor. (Higher than Montvale by 53,337, higher than Westwood by 72,668 or 49%!)
- ☞ We circulate more items in the first 5 hours of operation than 32 other libraries circulate during an entire day.
- ☞ Excluding miscellaneous one-time expenses, our operating budget remained unchanged.
- ☞ Manpower increased by only 1/10th of a full time equivalent.
- ☞ The cost per circulation remains one of the lowest in the Bergen County Cooperative Library System. In 2010 it was **\$3.40** per circulation.
- ☞ There were approximately 121,717 visitors to the library.
- ☞ **36%** of Hillsdale residents used a library card at least once during the year. The BCCLS system average is 28%.
- ☞ All of the public PCs were replaced in 2010.

The library circulated 221,504 items. This is a conservative total of over **\$3.3 million** in material value circulated on an operating budget of \$733,529 (excludes one time charges). This is a return on investment of 486% on the Borough's contribution of \$683,178. The library's circulation is far above that of local averages for libraries serving a similar population size and operating in our budget range. The library's overall operating budget closely follows local averages. As a percentage of our budget, we spent less on salaries and wages than local averages, enabling us to match spending on materials. In summary, the library continues to operate at a very high level of efficiency and productivity.

There are no statewide comparisons due to a change in the annual report provided by the State Library. A breakdown of statistics by population served or by budget size was not provided.

Comparisons to similar Bergen libraries are limited to those serving populations between 7,000 and 13,000 with 2009 operating budgets between \$600K and \$800K. The Bergen County Cooperative Library System statistics are available at: <http://www.bccls.org>

The BCCLS libraries used for comparison are:

Closter, Cresskill, Edgewater, Montvale, Oakland, Oradell, Park Ridge, Ridgefield, Ridgefield Park, River Edge, River Vale, Saddle Brook, Waldwick, Washington Twp, Westwood.

I. Circulation statistics

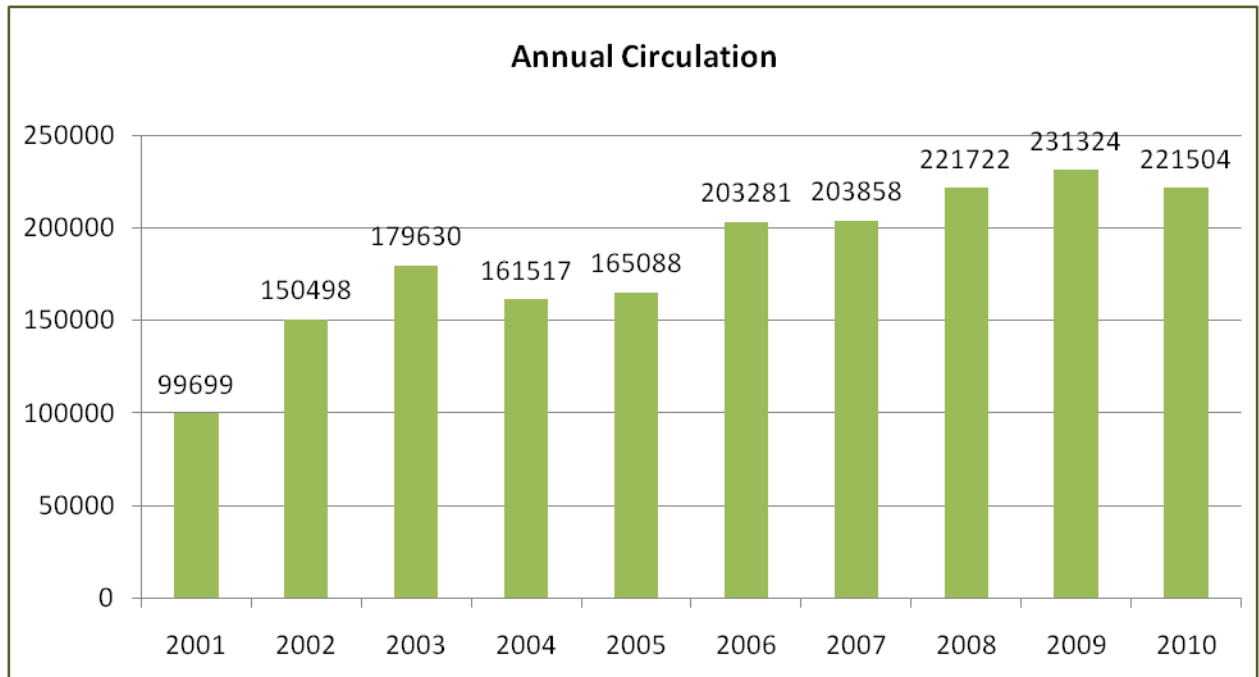
The computer registers a circulation every time an item is charged to a patron. Renewals also register as circulations. Approximately 23% of the circulation reported is a result of renewals. The following circulation reflects the number of Hillsdale items charged out to either Hillsdale borrowers or to borrowers from other libraries. In 2010 the library circulated 221,504 items. This includes 753 downloadable audio and/or eBooks. The children's department saw a drop off in borrowing of DVDs, paperbacks, and picture books. For the first time in decades, the circulation of adult materials equaled that of children's materials.

The 2010 average for similar Bergen libraries was 128,136.

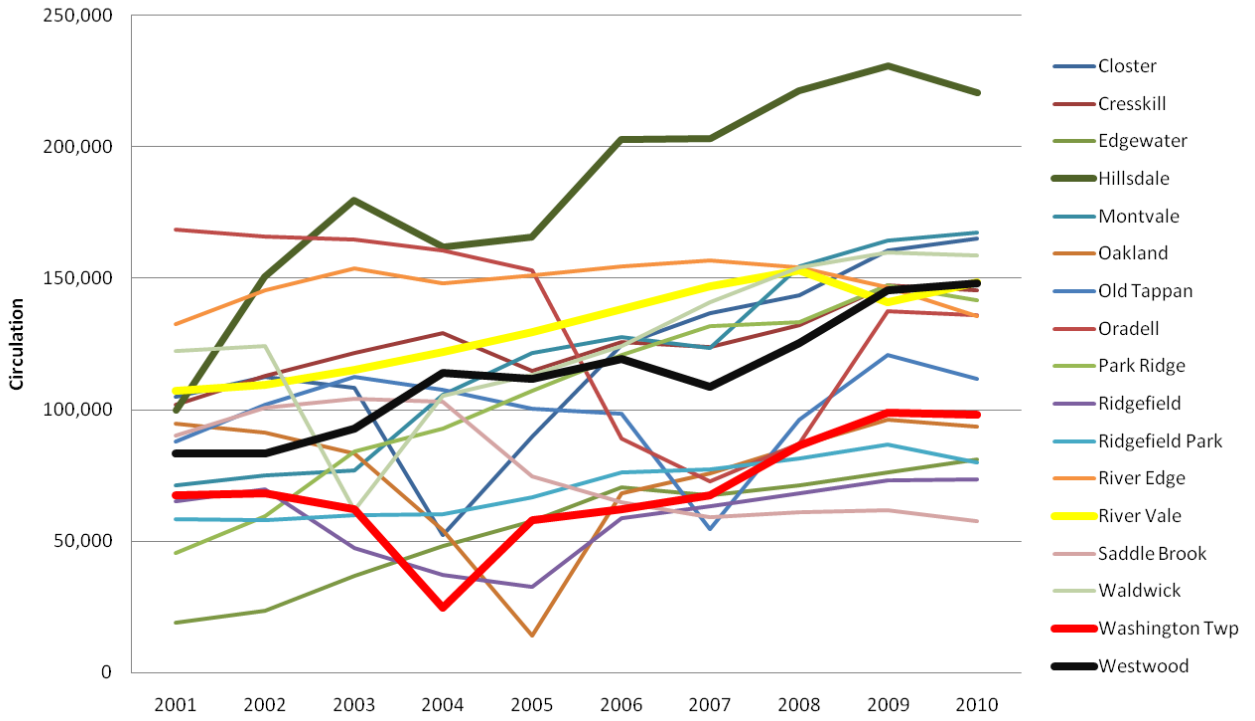
Hillsdale's 2010 circulation per capita was 22 items.

The 2010 average circulation per capita for similar Bergen libraries was 14.1 items.

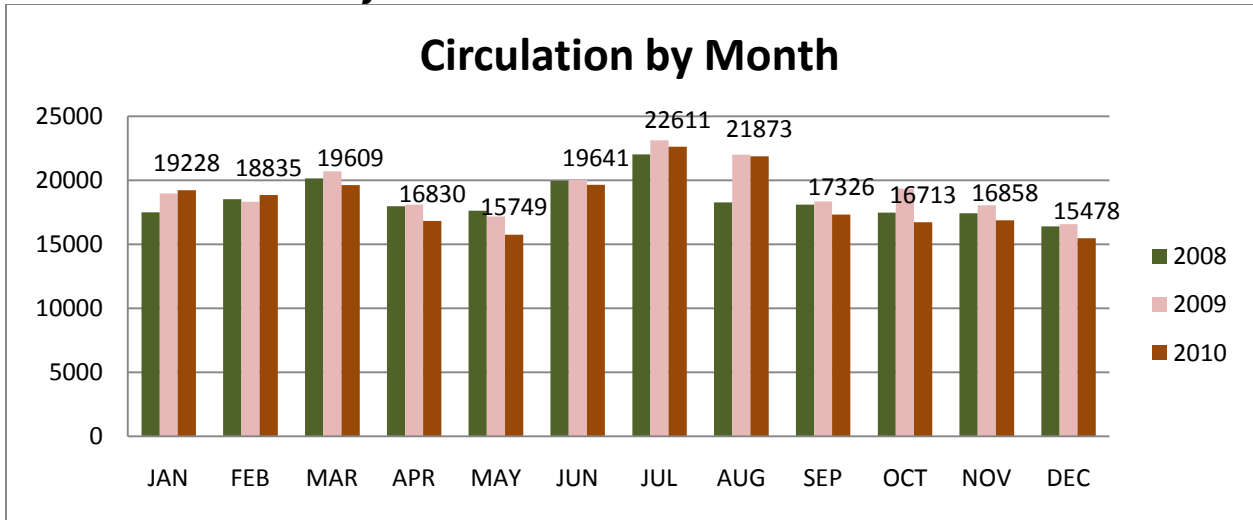
Annual circulation totals 2001 – 2010.



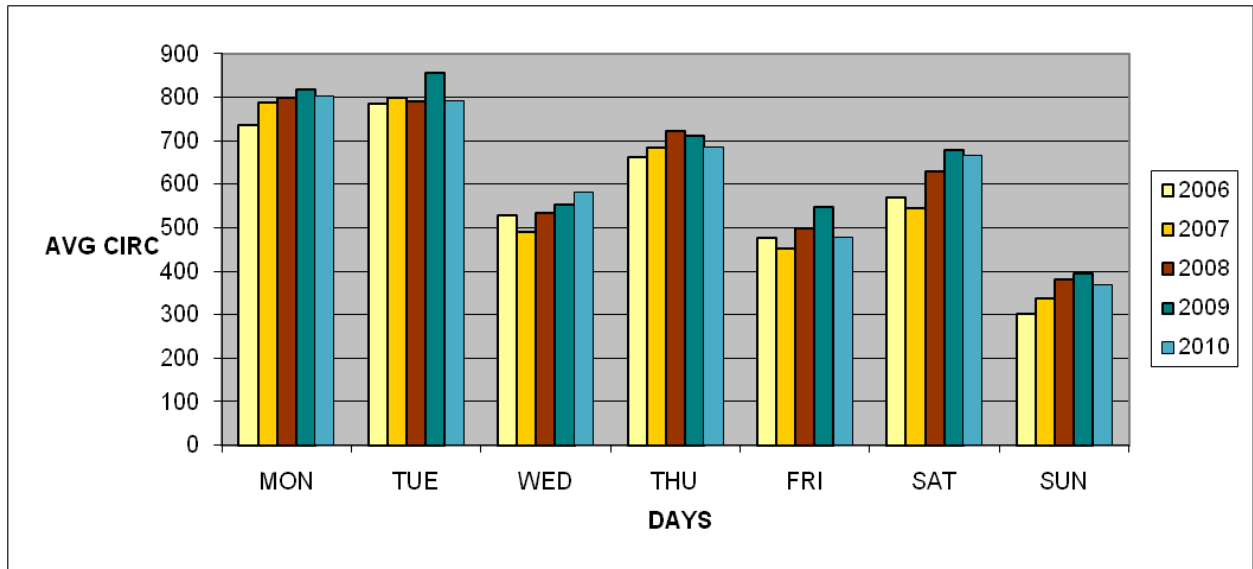
Trendlines of Similar BCCLS Libraries



Overall circulation by month 2008-2010.

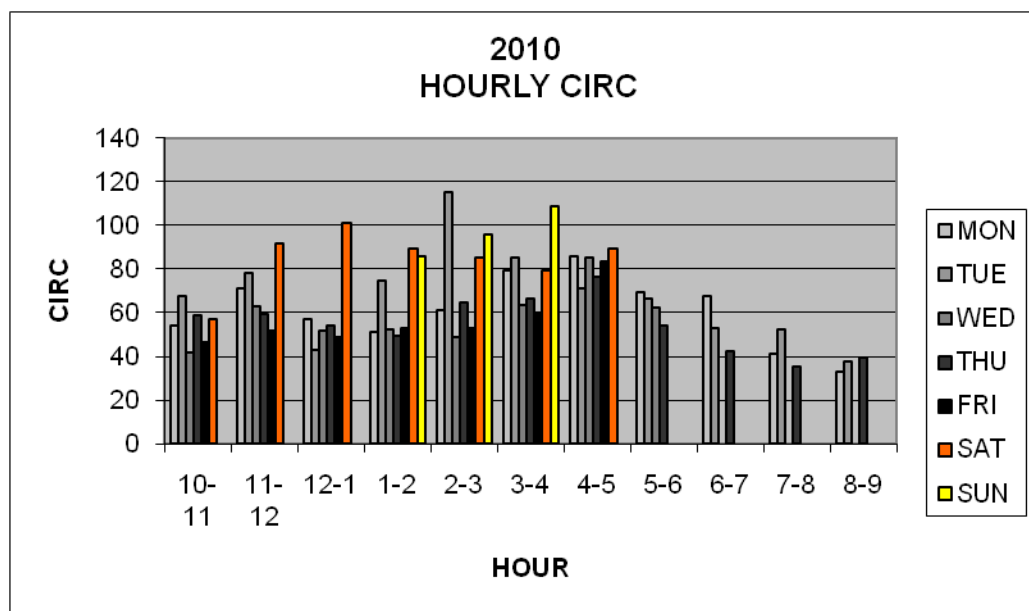


Daily circulation averages 2006 - 2010.



Average hourly circulation by day 2010.

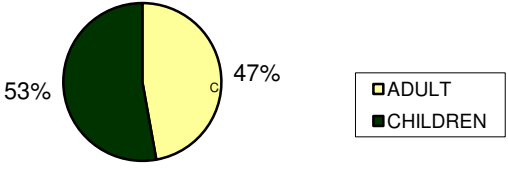
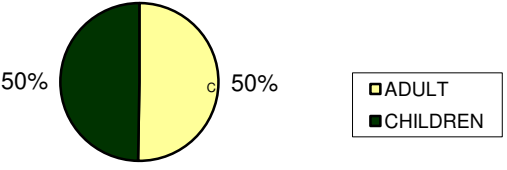
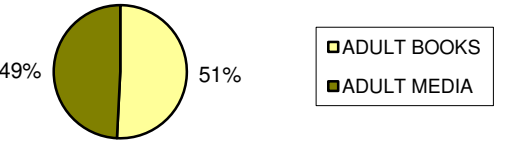
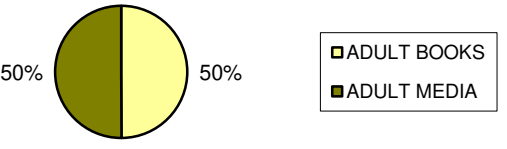
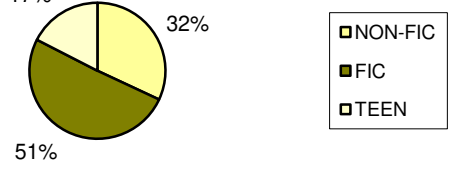

HOUR	MON	TUE	WED	THU	FRI	SAT	SUN
10-11	54	68	42	59	47	57	
11-12	71	78	63	59	52	92	
12-1	57	43	52	54	49	101	
1-2	51	75	52	49	53	89	86
2-3	61	115	49	65	53	85	96
3-4	79	85	63	66	59	79	109
4-5	86	71	85	76	84	89	
5-6	69	66	62	54			
6-7	68	53		43			
7-8	41	52		35			
8-9	33	38		39			



Circulation by material type and department.

The adult collection continues to show signs of improvement. The ratio of adult circulation compared to the children’s room improved by three percentage points to 50%. By comparison, in 2001 adult materials accounted for only 33% of all circulation. Overall adult circulation increased by 1,102 items. Overall juvenile circulation dropped 11,007 (-9%). The largest drops were board books (-1,096 21%), picture books (-1,359 8%), paperbacks (-3,309 9%), and DVDs (-3,438 11%).

There was no dramatic change in the proportional circulation between books and media. Children’s books continue to account for 71% of juvenile circulation.

Circulation by departments and material types 2009	Circulation by departments and material types 2010																				
<p>2009 CIRCULATION BY DEPARTMENT</p>  <table border="1"> <tr> <th>Department</th> <th>Percentage</th> </tr> <tr> <td>CHILDREN</td> <td>53%</td> </tr> <tr> <td>ADULT</td> <td>47%</td> </tr> </table>	Department	Percentage	CHILDREN	53%	ADULT	47%	<p>2010 CIRCULATION BY DEPARTMENT</p>  <table border="1"> <tr> <th>Department</th> <th>Percentage</th> </tr> <tr> <td>CHILDREN</td> <td>50%</td> </tr> <tr> <td>ADULT</td> <td>50%</td> </tr> </table>	Department	Percentage	CHILDREN	50%	ADULT	50%								
Department	Percentage																				
CHILDREN	53%																				
ADULT	47%																				
Department	Percentage																				
CHILDREN	50%																				
ADULT	50%																				
<p>2009 ADULT CIRCULATION</p>  <table border="1"> <tr> <th>Material Type</th> <th>Percentage</th> </tr> <tr> <td>ADULT BOOKS</td> <td>51%</td> </tr> <tr> <td>ADULT MEDIA</td> <td>49%</td> </tr> </table>	Material Type	Percentage	ADULT BOOKS	51%	ADULT MEDIA	49%	<p>2010 ADULT CIRCULATION</p>  <table border="1"> <tr> <th>Material Type</th> <th>Percentage</th> </tr> <tr> <td>ADULT BOOKS</td> <td>50%</td> </tr> <tr> <td>ADULT MEDIA</td> <td>50%</td> </tr> </table>	Material Type	Percentage	ADULT BOOKS	50%	ADULT MEDIA	50%								
Material Type	Percentage																				
ADULT BOOKS	51%																				
ADULT MEDIA	49%																				
Material Type	Percentage																				
ADULT BOOKS	50%																				
ADULT MEDIA	50%																				
<p>2009 ADULT BOOK CIRCULATION</p>  <table border="1"> <tr> <th>Category</th> <th>Percentage</th> </tr> <tr> <td>NON-FIC</td> <td>31%</td> </tr> <tr> <td>FIC</td> <td>50%</td> </tr> <tr> <td>TEEN</td> <td>19%</td> </tr> </table>	Category	Percentage	NON-FIC	31%	FIC	50%	TEEN	19%	<p>2010 ADULT BOOK CIRCULATION</p>  <table border="1"> <tr> <th>Category</th> <th>Percentage</th> </tr> <tr> <td>NON-FIC</td> <td>32%</td> </tr> <tr> <td>FIC</td> <td>51%</td> </tr> <tr> <td>TEEN</td> <td>17%</td> </tr> </table>	Category	Percentage	NON-FIC	32%	FIC	51%	TEEN	17%				
Category	Percentage																				
NON-FIC	31%																				
FIC	50%																				
TEEN	19%																				
Category	Percentage																				
NON-FIC	32%																				
FIC	51%																				
TEEN	17%																				
<p>2009 ADULT MEDIA CIRCULATION</p>  <table border="1"> <tr> <th>Material Type</th> <th>Percentage</th> </tr> <tr> <td>AUDIO BOOK</td> <td>4%</td> </tr> <tr> <td>COMPACT DISC</td> <td>8%</td> </tr> <tr> <td>DVD</td> <td>56%</td> </tr> <tr> <td>GAMES</td> <td>32%</td> </tr> </table>	Material Type	Percentage	AUDIO BOOK	4%	COMPACT DISC	8%	DVD	56%	GAMES	32%	<p>2010 ADULT MEDIA CIRCULATION</p>  <table border="1"> <tr> <th>Material Type</th> <th>Percentage</th> </tr> <tr> <td>AUDIO BOOK</td> <td>6%</td> </tr> <tr> <td>COMPACT DISC</td> <td>8%</td> </tr> <tr> <td>DVD</td> <td>57%</td> </tr> <tr> <td>GAMES</td> <td>29%</td> </tr> </table>	Material Type	Percentage	AUDIO BOOK	6%	COMPACT DISC	8%	DVD	57%	GAMES	29%
Material Type	Percentage																				
AUDIO BOOK	4%																				
COMPACT DISC	8%																				
DVD	56%																				
GAMES	32%																				
Material Type	Percentage																				
AUDIO BOOK	6%																				
COMPACT DISC	8%																				
DVD	57%																				
GAMES	29%																				



Notes: "Other" children's books include board books, picture books, easy readers and graphic novels.

"Other" children's media include audio books, CD-Rom, and compact discs.

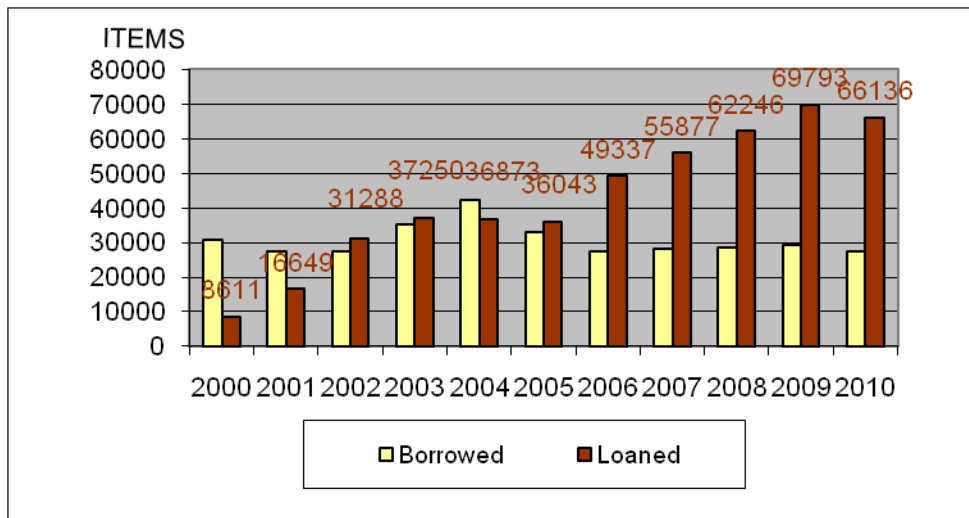
Reciprocal borrowing

The Hillsdale Free Public Library participates in the Bergen County Cooperative Library System (BCCLS). Members of Hillsdale Library may borrow directly from other BCCLS Libraries or they may choose to borrow via electronic loan request. Reciprocal borrowing statistics refer to Hillsdale items lent to other BCCLS libraries and items borrowed from other BCCLS libraries.

In 2010, the number of items loaned dropped by 5%. Washington Twp. accounted for 8.8% (9.3%) of our circulation. Westwood accounted for 6.7% (4.9%). River Vale accounted for 4.2% (3.8%). 2009 percentages in parenthesis. Hillsdale Library filled 17.6% of all demand from Washington Twp patrons. Hillsdale Library filled 9.5% of all demand from Westwood patrons.

The library receives a reimbursement from BCCLS whenever lending exceeds borrowing (net plus). The net plus reimbursements received for 2010 totaled \$17,210 (\$17,252 in 2009).

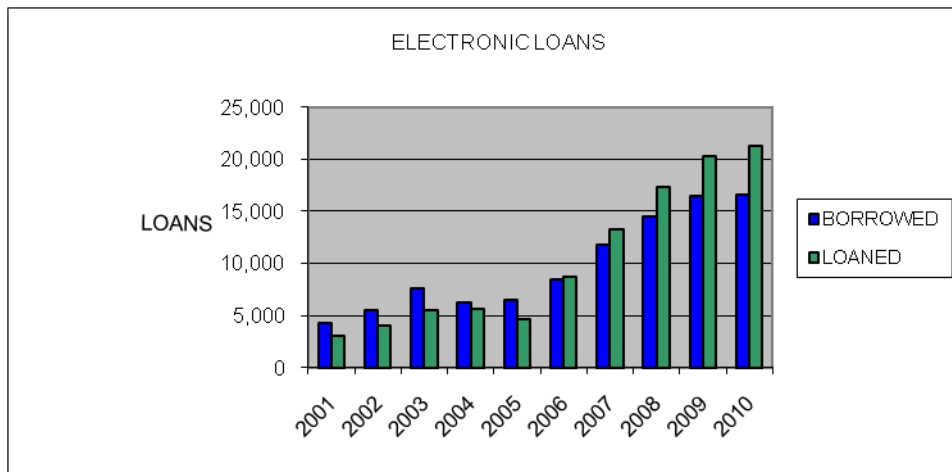
Reciprocal borrowing 2000 – 2010.



	BORROWED		LOANED	
2001	27312	-11%	16649	93%
2002	27456	1%	31288	88%
2003	35356	29%	37250	19%
2004	42199	19%	36873	-1%
2005	33098	-22%	36043	-2%
2006	27388	-17%	49337	37%
2007	28165	3%	55877	13%
2008	28504	1%	62246	11%
2009	29325	3%	69793	12%
2010	27462	-6%	66136	-5%

Electronic loans

Electronic Loans are a subset of reciprocal circulation. Instead of patrons doing the work, library staff devote their time to handling these tasks. Every loan request initiated by a Hillsdale patron is processed by a staff member who determines if Hillsdale owns the item or if a request must be forwarded via e-mail to another BCCLS library. Requests from other libraries are received via e-mail. These items are pulled from the shelves, checked out to the patron, and packaged for delivery. When receiving items from libraries they are unpackaged, routed in, and the patron is contacted. Fulfilling loan requests from other libraries is a time intensive activity. Each transaction may take an average of 2 minutes in staff time. In 2010, processing electronic loans consumed 69% of a full-time (35 hour/wk) staff member's time. In 2001, it was 14%.



	BORROWED	CHANGE	LOANED	CHANGE
2001	4,345		3,105	
2002	5,458	25.6%	4,001	28.9%
2003	7,611	39.4%	5,495	37.3%
2004	6,261	-17.7%	5,643	2.7%
2005	6,530	4.3%	4,715	-16.4%
2006	8,430	29.1%	8,738	85.3%
2007	11,848	40.5%	13,212	51.2%
2008	14,441	21.9%	17,335	31.2%
2009	16,444	13.9%	20,282	17.0%
2010	16,653	1.3%	21,279	4.9%

II. Collections

Materials are constantly added and withdrawn from the library. The library expended \$98,988 (13.1% of the budget) on materials in 2010. This is a \$1,990 increase from 2009. A small percentage of the collection is acquired by donation.

The library collections can be divided into many subcategories. For the purposes of this report only general categories are presented. Miscellaneous items and periodicals are excluded from the collection counts and pie charts. Young Adult books combine both fiction and non-fiction titles. Young Adult audio books are reported under adult audio visual materials.

Media represents 12% of the collection and accounts for 38.8% of circulation. Books represent 88% of the collection and accounts for 59.5% of circulation. Loose issue magazines are omitted from these calculations. Magazines account for 1.7% of all circulation.

The 2009 Bergen libraries average materials budget was \$98,967 or 13.3%

ADULT COLLECTIONS	ADDED 2010
NON-FIC	945
FICTION	1534
TEEN	624
REFERENCE	61
AUDIO BOOKS	232
MUSIC	353
VIDEO	497
CHILDREN'S COLLECTIONS	
NON-FICTION	266
FICTION	1941
BOARDBOOK	125
PICTUREBOOK	534
EASY READERS	121
AUDIOBOOKS	30
MUSIC	17
VIDEO	344

Hillsdale's total collection excluding periodicals is 71,727 items.

The 2009 Bergen libraries average collection was 58,698.

Collection diversity

ADULT COLLECTIONS	
NON-FIC	12,336
FICTION	12,075
TEEN	3,817
REFERENCE	907
AUDIO BOOKS	1,015
MUSIC	2,439
VIDEO	2,535
BOOKS	29,135
MEDIA	5,989
CHILDREN'S COLLECTIONS	
NON-FICTION	6,565
FICTION	18,154
BOARDBOOK	1,288
PICTUREBOOK	6,128
EASY READERS	1,616
AUDIOBOOKS	183
MUSIC	291
VIDEO	2,378
BOOKS	33,751
MEDIA	2,852
Total Collection	71,727

Collection age

Age of the collection is based upon the publication date of the items in the collection. The overall collection continues to improve. Non-fiction remains the focus of targeted weeding and development. Although many new reference and non-fiction titles have been purchased, some old classics are bringing down the averages.

	Hillsdale 2009	BCCLS 2010	Hillsdale 2010	River Vale 2010	Westwood 2010
All Collections	1999	1997	2000	2000	1997
Adult Nonfiction	1991	1995	1993	1998	1993
Adult Fiction	2003	2000	2004	2002	1996
Juvenile	1999	1996	2000	1997	1998
Juvenile Media	2003	2003	2004	2004	2001
Media	2003	2003	2004	2003	2000
Reference	1988	1984	1989	1992	1985
Young Adult	2003	2002	2005	2001	2004

III. Hours of service

The library was open 2,844 hours and 336 days in 2010.

The library was open 2,843 hours and 337 days in 2009.

The library was open 2,876 hours and 342 days in 2008.

The library was open 2,844 hours and 339 days in 2007.

The library was open 2,849 hours and 338 days in 2006.

The library was open 2,809 hours and 320 days in 2005.

The library was open 2,593 hours and 324 days in 2004.

The library was open 2,895 hours and 341 days in 2003.

The library was open 2,836 hours and 343 days in 2002.

Manpower

Manpower is measured in full time equivalents (FTE). A full-time work week is 35 hours. There are four (4) full-time staff members. The remaining part-time employees, including pages comprise an additional 5.9 FTE. The overall manpower is 9.9 FTE.

Part-time employee hours in 2009:

Page Hours	802
Library Assistant Hours	9,601
Sunday Librarian Hours	52
Total P-T Hours	10,507

Part-time employee hours in 2010:

Page Hours	763
Library Assistant Hours	9,968
Sun Librarian Hours	0
Total P-T Hours	10,731

FTE=35 hours x 52 weeks

1,820.00

PT FTE =

5.8

FTE=35 hours x 52 weeks

1,820.00

PT FTE =

5.9

Hillsdale expended \$359,611 on salaries and wages in 2010. When combined with benefits, social security, and insurance, personnel expenses totaled \$457,704 or 61% of the budget.

The 2009 average for Bergen libraries was \$483,473 or 64.7%

Public Computer Usage

The library makes available 18 computer workstations for the public. Users are guaranteed up to one hour at a PC per day, but frequently longer sessions may occur depending upon demand. During the year approximately 17,924 individual sessions occurred. This is a slight drop from 2009. On a per-PC basis, the rate of use remained the same. Figures are based upon sign-ups at the main desk. Statistics for the children room were not generated as we currently do not register users of the kids pcs. This also does not include users of our Wi-Fi access.

Average Number of Daily Sessions.

	Monday	Tuesday	Wednesday	Thursday	Friday	Saturday	Sunday	Totals
2007	66	66	55	63	43	47	26	17,878
2008	76	72	57	70	47	48	29	19,682
2009	71	68	56	67	46	45	30	18,643
2010	68	68	52	63	45	44	29	17,924

Volunteers

43 volunteers provided 2,567 hours of service.

Most volunteer hours are contributed by the members of the Pascack Valley Literacy Volunteers. Adults assist other adults in learning English as a Second Language (ESL). Annual statistics for this program are tabulated in the spring. There are currently 25 adult volunteers at the start of 2010. Doris Streich is responsible for coordinating all of the tutors and students. Doris volunteers at the library between 8 and 15 hours weekly, approximately 400 hours annually. Tutors account for over 2,061 hours annually.

A list of volunteer opportunities is found on the library website.

IV. Patron registration and library use

448 people received Hillsdale Library cards in 2010. Of the 5,740 currently registered users 3,671 used their card at least once during 2010. That represents 36% of the population of the Borough. The BCCLS system-wide average is 28%. This percentage is not always a precise representation because families may use only one card to borrow materials for several family members. These are typically residents that have moved on in one way or another. Registration percentage comparisons with other towns vary widely due to variety of retention policies.

PATRON REGISTRATION						
	2006	2007	2008	2009	2010	Population
NEW REGISTRATIONS	545	458	558	470	448	10,087
TOTAL CARDS	7,169	6,767	5,856	5,893	5,740	
% OF POPULATION	71%	67%	58%	58%	57%	
CARDS USED DURING YEAR	3,733	3,650	3,729	3,752	3,671	
% OF POPULATION	37%	36%	37%	37%	36%	

V. Programs

During 2010, 2,543 people attended 150 library sponsored programs. In accordance with State Library reporting procedures, individual story time sessions are recorded as single programs.

1,054 people attended 94 programs and/or meetings sponsored by community organizations. A total of 3,597 people participated in 244 programs/events.

VI. Other activities

The staff of the library actively participates at workshops and meetings of the Bergen County Cooperative Library System and within the New Jersey Library Association. Laura Leonard serves on the Young Adult section of NJLA. David Franz serves as trustee on the board of the Literacy Volunteers of Pascack Valley.

2010 Awards and Honors

- Received a public relations award from the New Jersey Library Association for our “Staff Picks” publicity campaign which combined custom t-shirts and life size cardboard cutouts of staff recommending their favorite books, music, and movies.

- **2010 Statement of value**

5740	Registered Hillsdale Patrons
3671	Used their card at least once in 2010.
10087	2001 Population
56.9%	Hillsdale Residents are registered users of the library. County average is 58%
221,504	Number of items circulated by the library in 2010.
\$15.00	Conservative cost of an average library item
\$3,322,560.00	Total value of items circulated by the Hillsdale library A return on investment of 486%
<u>\$683,178.00</u>	2010 budget commitment toward the library from the Borough
\$2,639,382.00	Total SAVINGS to residents of Hillsdale from the maintenance of a free public library in 2010. This is money that can then be spent patronizing local businesses, or saved in retirement accounts, or saved toward college tuition. If Hillsdale did not have access to a free library and residents wished to continue purchasing books for their children and their own reading interests, they would have spent \$3,322,560.00 over the the course of 2010. Also, bear in mind that the library provides assistance in locating materials. The library is able to locate and borrow from libraries throughout the United States. The library also supplies free access to the Internet, children's story hours, programs, and tutors for adults learning english as a second language.

2010 OPERATING BUDGET

2010 Budget Summary	2009 BUDGET	2009 FINAL	2010 BUDGET	2010 FINAL
LIBRARY BUDGET LINES				
01 Collection Development				
0110 A - Adult Books	28,800	32,486	26,070	36,739
0111 C - Children's Books	16,000	19,017	14,500	17,196
0112 YA - Young Adult Books	6,500	6,672	5,885	6,937
0113 R - Reference Books	6,000	6,997	5,430	6,786
0114 P - Periodicals	6,200	6,712	5,615	6,860
0120 ABA - Audio Books - Adult	7,000	6,965	6,335	6,048
0121 ABC - Audio Books - Child	800	928	725	0
0130 MA - Music CDs - Adult/YA	4,000	3,800	3,620	3,765
0131 MC - Music CDs - Child	300	281	275	116
0140 VA - Video/DVD - Adult	8,500	8,890	7,690	9,069
0141 VC - Video/DVD - Children's	3,000	4,249	2,713	4,279
0150 - Databases / Software				1,194
Total Collection Development	87,100	96,998	78,858	98,988
02 Maintenance & Utilities				
0210 E - Electric	41,100	32,717	40,000	32,478
0220 G - Gas	10,000	8,939	11,075	7,480
0230 T - Telephone	3,600	3,679	3,900	3,666
0240 W - Water	2,350	1,823	2,350	2,155
0250 - Repairs/ Maintenance	2,500	6,985	3,000	9,327
0260 - Service Contracts	4,700	4,445	4,800	4,036
Total Maintenance & Utilities	64,250	58,589	65,125	59,141
03 Supporting Services				
0310 - BCCLS *	22,740	22,740	23,490	23,315
0320 - Supplies	12,000	14,354	13,500	14,277
0322 - Photocopier	3,300	3,164	3,500	3,455
0325 - Postage	1,500	1,117	1,500	1,003
0340 - Programs	3,000	3,498	3,000	4,690
0341 - Adult ESL Program	2,000	2,000	2,000	2,000
0350 - Memberships	350	335	350	335
0360 - Conferences/Travel	2,250	1,670	1,500	1,102
0380 - Audit	2,500	2,500	3,500	3,250
0390 - Recording Secretary	624	520	648	540
0392 - Professional Development	0	0	200	0
Total Supporting Services	50,264	51,898	53,188	53,967
04 State Aid				
State Aid 2008 for 2009/10 *	10,229	10,229		
State Aid 2009 for 2010/11			9,348	9,348
Total State Aid Expenditures	10,229	10,229	9,348	9,348
09 Other Expenses				
0910 - Friend's Supported		5,069		4,754
0930 - Miscellaneous		4,905		19,797
0940 - Bank Charges / discrepancies		0		838
0960 - Reimburse Libraries		190		551
Total Unbudgeted items	0	10,164		25,940
LIBRARY LINE TOTALS	211,843	227,877	206,519	247,384

BOROUGH BUDGET LINES

Salaries & Wages	359,000	358,342	372,100	359,611
Building Maintenance	46,360	31,151	48,678	34,719
Disposal Services	1,000	1,000	1,000	1,000
Payroll Services	2,500	983	2,500	825
Social Security	27,464	25,986	28,466	27,102
Insurance - Life	400	374	400	374
Insurance - Workers Comp	1,400	1,400	1,400	2,640
Insurance - Medical	73,500	67,023	63,000	62,720
Insurance - Dental	4,429	4,344	4,284	5,256
Insurance - Liability	14,479	16,205	14,479	16,698
Total Borough Budget Items	530,532	506,809	536,307	510,946
TOTAL LIBRARY EXPENSES	742,375	734,686	742,826	758,331

LIBRARY INCOME	2009 BUDGET	2009 FINAL	2010 BUDGET	2010 FINAL
Money handled directly by Boro	530,532	506,809	536,307	505,941
Boro Cash Support	152,996	153,176	146,871	146,871
Boro Reserve Balance Prev. YR - brought forward*	0		24,162	24,162
State Aid	10,229	9,348	0	4,787
Balance State Aid Prev. Yr brought forward (est.)*		10,229	9,348	9,348
Used Book Sales	2,000	2,928	2,000	2,714
Donations	2,000	7,158	2,000	6,012
Fines	21,200	24,595	21,200	21,268
Grants	0	0	975	975
Interest (operating)	718	204	100	176
Memberships (WCL)	8,000	10,875	9,000	10,825
Net lender reimbursement	10,000	14,324	10,000	25,817
Photocopier	1,700	2,498	2,000	2,666
Miscellaneous	3,000	6,625	4,000	6,341

TOTAL LIBRARY INCOME	742,375	748,769	767,963	767,904
-----------------------------	----------------	----------------	----------------	----------------

Updated to reflect final maintenance charge-backs 6/10/2011 - djf

Librarian's Appendix

Inter-Library Loan

Through the use of the statewide JerseyCat Interlibrary Loan System our library can borrow from nearly any public and academic library in the State and many others throughout the U.S. We are also called upon to send our unique items to other libraries in the state. In 2010, 43 items were borrowed for Hillsdale patrons and we supplied 151 items to libraries outside of Bergen County.

Reference

A sampling of reference questions with sources:

ARTS/LITERATURE

- I need an article from a 2006 issue of "Smithsonian" about who really wrote Shakespeare's plays (Ebsco database)
- So do you have any books on art? What is the definition of art? (*Grove's Dictionary of Art* and *The Dictionary of the History of Ideas*)
- I need information about the author, Michael Shaara (Infotrac's Literature Resource Center)
- I need the play, "You're a Good Man Charlie Brown" (Hillsdale Library) and "Dark at the Top of the Stairs" (Ridgewood Public Library)
- I need literary criticism for the *Tale of Two Cities* (One book in our library and articles accessed through Infotrac's Literature Resource Center)
- I need examples of architecture from ancient China & Japan for a comic strip I am working on (various books from the non-fiction & juvenile collection)

History/Government/Political

- I need to know what guilds were like in Chaucer's time (two books in the Hillsdale Library)
- Do you have information on the history of the political parties in the US? (two books in the Hillsdale Library)
- I need to know 10 significant events from 2003 (*World Almanac* and "Time" magazine article accessed via Ebsco database)
- What kinds of weapons would an army use to fight zombies? It's for an assignment about the book, *World War Z*. (books on weapons, the military, and special forces were provided)
- I need to know about Petrarch. Actually the patron needed information on how Humanism during the Renaissance affecting Petrarch's writings. (*The Dictionary of the History of Ideas* and a circulating book on the Renaissance)

that the patron checked out. I also ordered a book on Petrarch from another BCCLS library)

Health/Medicine/Science

- Do you have information about the effect of music on babies' brains? (2 books on music and the brain in our library and articles accessed via Ebsco)
- Two students came in together, each needing biographical information on scientists – Blaise Pascal & Daniel Bernoulli (Infotrac's Biography Resource Center and articles in a reference set). These students were previously turned away at another library.
- How do you plant spider plant babies? (two internet sources with photos)
- I need information about the environmental policy of the US vs other nations (one book in our library and online sources including the www.un.org)
- I need information about the bacteria *Helicobacter pylori*. (five pages in the *Gale Encyclopedia of Medicine*. An entry found using the Ebsco database was emailed to the patron)

Reader's Advisory

- I need a book for a 9th grade girl who liked *Uglies* by Scott Westerfeld (two books were recommended and checked out)
- I'm looking for a novel with the word Lamb in the title. It's about religion. (I used NoveList to identify the book, *Lamb : The Gospel According to Biff, Christ's Childhood Pal*)
- A patron was waiting for the fourth book in the Pretty Little Liars series. I recommend *Private* by Kate Brian while she waited. She has completed all the books in both series!

Business/Commerce/Finance

- I need a listing of CPAs in Bergen County (www.aicpa.org, www.moneymattersnj.com)
- I want Information about the company Facet BioTech (Business & Company Resource Center via Infotrac)
- A patron came in and stated, "I'm starting a business. Can you help me adjust the order form and show me how to insert a table?" (this was completed in Word on a public PC)
- Where should I send my NJ tax return, the post office did not know. (<http://www.state.nj.us/treasury/taxation/>)

TEEN PROGRAMS

We host various monthly programs, as well as stand-alone events. The monthly programs include: Teen Advisory Group, Pizza & Pages, and The Pascack Valley High School Book Club. Other events include: various game events (both video and board games), craft programs, mystery nights, booknics, and movie screenings. I am very proud of the two book clubs because they are both collaborative projects with the local schools.

Pizza & Pages is in its second year. This is a book club for seventh & eighth grade students at George White Middle School. The librarian with whom I started the club retired, but the new librarian, Stacey Belhumer, wanted to continue the group. The group meets during lunch to discuss the title for that month. Books are ordered through BCCLS and students pick them up at the public library. I create discussion questions prior to the meeting. Pizza is provided with money from The Friends of The Hillsdale Library and the George White FFA. The discussions have been lively and the students are very engaged.

The second book club program is the Pascack Valley High School Book Club. This club meets monthly after school. I recommend titles to the student leader and provide additional discussion questions as needed. I go to PV for the discussions and order copies of the books for students to pick up at the public library. The faculty advisor is Mrs. Bonnie Slockett.

All told 796 teens participated in 55 programs during the course of the year. These statistics include summer events which are described in more detail below.

TEEN SUMMER READING REPORT

The program is designed for students entering grades 7-12. 77 students registered and 70 of those recorded more than one book. I was excited that approximately 30 students joined for the first time this year. 27 boys participated in the program. Although this is an increase over last year, it is still lower than I would like. I will continue to make an effort to attract more boys to the library.

This was the first year that students could record their progress online through a software program provided by Evanced. This program is funded by the New Jersey State Library. I received very positive feedback from the teens. Teens were able to log their progress from any Internet computer at any time. The feature that I like best is the ability for teens to post ratings and reviews of books and events. Over 800 reviews and/or ratings were posted. In past years when the option for creating paper reviews was available I never received more than 15. Reviews & ratings can still be viewed at: <https://nj.evanced.info/hillsdale/sr/homepage.asp>

Students were required to keep a log of the number of pages they read and received prizes at the end of the summer. The teens continue to amaze me with how much they read. Approximately 226,001 pages were recorded, with one teen reading 15,907 pages!! The average teen read 3,183 pages this summer, which is equivalent to approximately 16 books.

In addition, 18 special events were offered. These included a library late night to start off the summer and a wrap-up party in early September to celebrate and distribute prizes. Those two events had the highest attendance with 26 and 35 teens respectively. In total, 235 teens came to library events during the summer.

This program would not be possible without the support of the library staff, especially David Franz, The Board of Trustees, and The Friends of The Library.

PROFESSIONAL DEVELOPMENT

In June I completed my term as President of the Young Adult Section of NJLA. I enjoyed presiding over the meetings, overseeing programs sponsored by the YA section at NJLA's annual Conference, and participating as a member of the Garden State Teen Book Awards committee.

I attended a seminar on Autism and Libraries along with Cindy Greenwald, the Children's Librarian. It was very beneficial to learn concrete ways in which two libraries made their institutions more welcoming and accessible to autistic patrons and their families.

I was able to participate in a webinar entitled, Teen Programs for Less than \$100. This session provided some wonderful ideas and inspiration. I was able to “attend” without leaving the library!

Respectfully submitted,

Laura Leonard
Reference / Teen Librarian

Libraries used for comparison. Data is 2009 except for 2010 circulation.

	Operating Total	2009 CIRC	Cost per Circ	Pop.	2010 CIRC	CIR/CAP	Personnel	Pers	Materials	Mat	Materials	Per capita Materials
Closter	772,881	160,559	4.81	8,383	164,992	20	461,668	59.7%	121,155	15.7%	\$14.45	
Cresskill	782,950	147,476	5.31	7,746	145,332	19	527,600	67.4%	152,364	19.5%	\$19.67	
Edgewater	772,279	71,190	10.85	7,677	81,137	11	467,914	60.6%	163,515	21.2%	\$21.30	
Hillsdale	733,476	230,656	3.18	10,087	220,751	22	457,467	62.4%	103,881	14.2%	\$10.30	
Montvale	758,432	154,438	4.91	7,034	167,414	24	444,434	58.6%	146,900	19.4%	\$20.88	
Oakland	850,427	86,267	9.86	12,466	93,452	7	692,456	81.4%	55,927	6.6%	\$4.49	
Oradell	648,071	87,035	7.45	8,047	135,790	17	\$426,174	65.8%	\$89,134	13.8%	\$11.08	
Park Ridge	657,392	133,335	4.93	8,708	141,775	16	391,508	59.6%	117,326	17.8%	\$13.47	
Ridgefield	714,786	68,139	10.49	10,830	73,375	7	472,839	66.2%	85,754	12.0%	\$7.92	
Ridgefield Park	719,885	81,534	8.83	12,873	79,810	6	484,938	67.4%	64,225	8.9%	\$4.99	
River Edge	768,859	146,410	5.25	10,946	135,492	12	625,002	81.3%	69,035	9.0%	\$6.31	
River Vale	812,741	153,087	5.31	9,449	148,576	16	437,045	53.8%	105,677	13.0%	\$11.18	
Saddle Brook	757,671	61,037	12.41	13,155	57,693	4	517,885	68.4%	50,022	6.6%	\$3.80	
Waldwick	683,365	154,043	4.44	9,622	158,568	16	439,646	64.3%	100,492	14.7%	\$10.44	
Washington Twp	698,807	86,528	8.08	8,938	97,936	11	371,209	53.1%	69,301	9.9%	\$7.75	
Westwood	795,474	145,469	5.47	10,999	148,083	13	517,782	65.1%	88,764	11.2%	\$8.07	
Average					128,136	14	\$483,473	64.7%	98,967	13.3%	\$11.01	